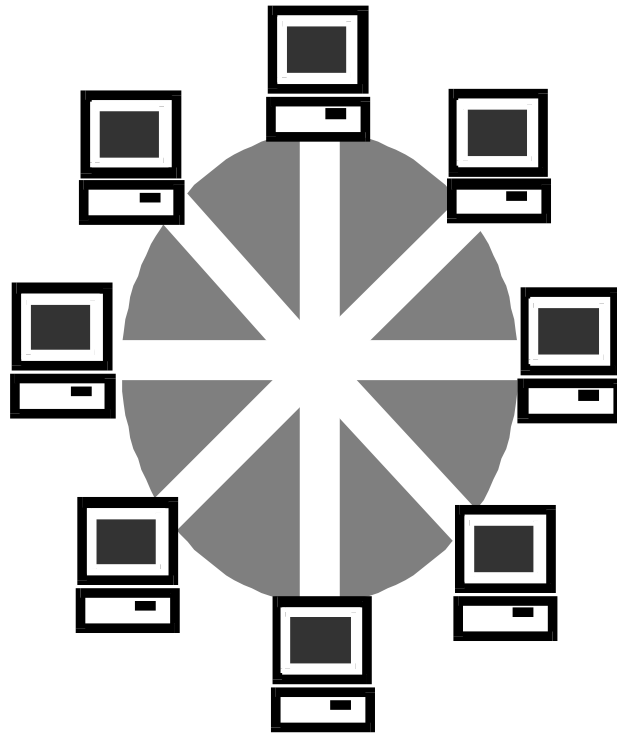


# WLAN CardBus Adapter

## Quick Install Guide

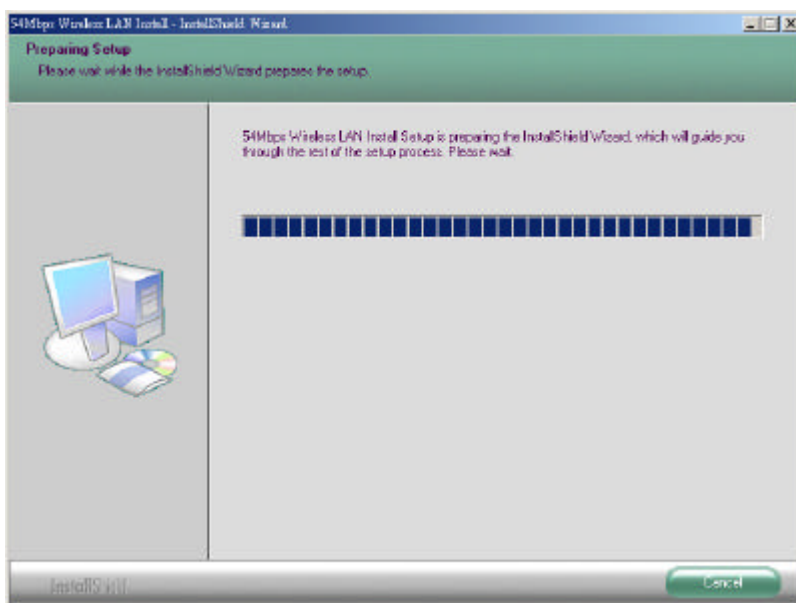


4729428GZZZ0

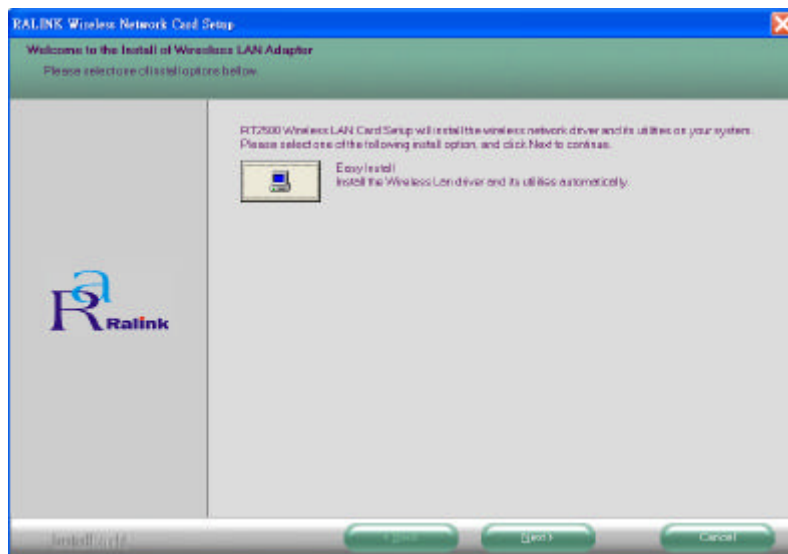
**Note: If you insert WLAN CardBus before installing the driver and utility, the operating system will detect a new device and start to configure the new device. Click Cancel to finish the wizard. Follow the instruction step by step to install the WLAN CardBus Adapter.**

## Install WLAN CardBus Adapter Utility and Driver

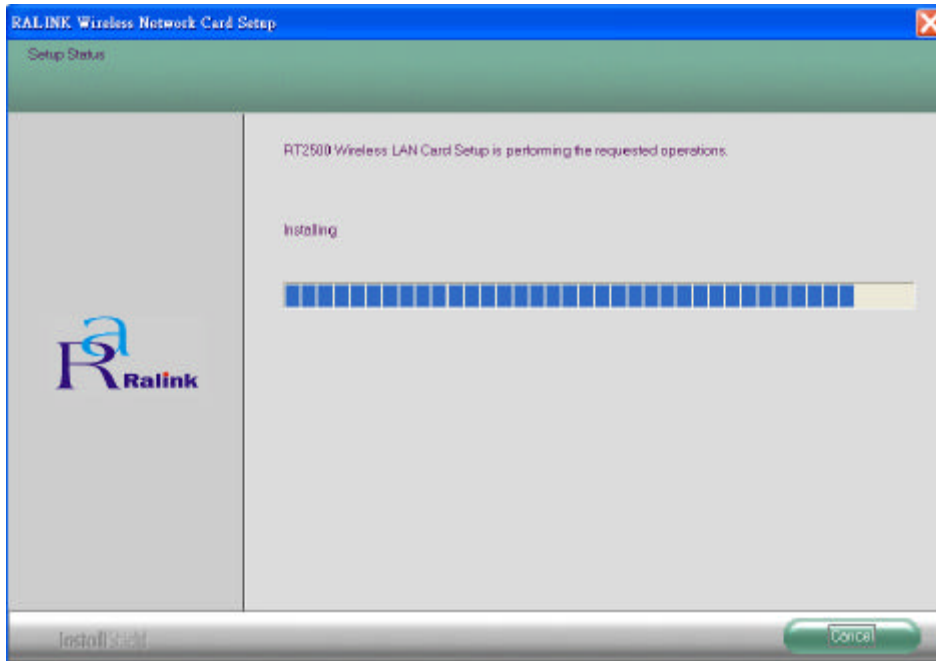
Insert the setup CD into your CD-ROM Drive. Then, the InstallShield Wizard should launch automatically, if it does not launch automatically, double-click setup.exe in your CD-ROM Drive.



Click Next button in the following window.



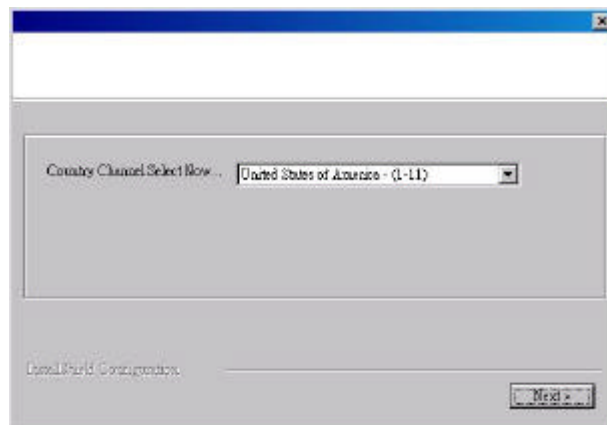
The InstallShield Wizard is copying the necessary files to the system. The progress indicator shows the installing status.



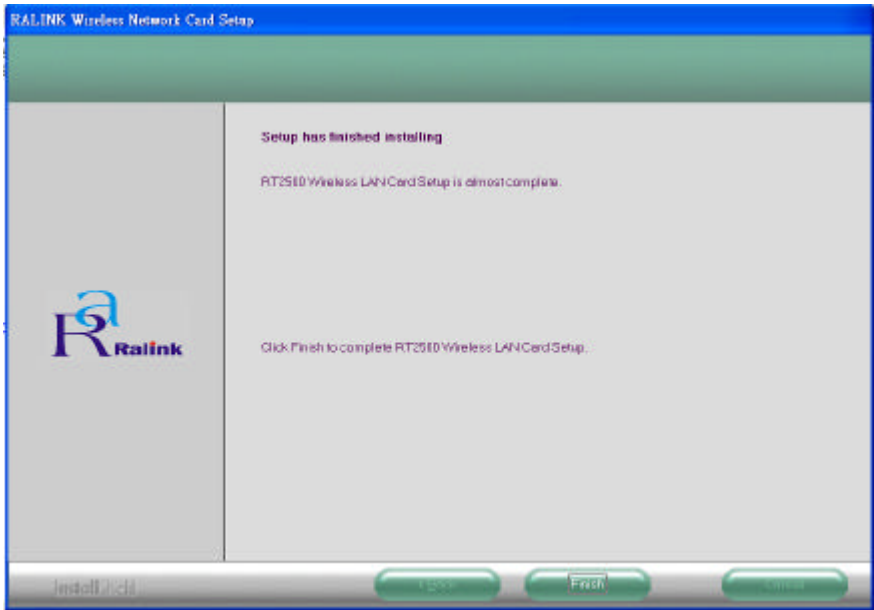
Plug-in the WLAN CardBus Adapter into your CardBus slot when the window below appears.



If this is the first time you install the software, the window below will appear. Select your current country region then click Next.



**Click Finish, when the installation is completed.**



After completing the installation, the icon  will appear in the system tray. Double-click the icon to configure the WLAN CardBus Adapter.

