

Wireless LAN Adapter Quick Installation Guide

Version 1.0

5/05/2003

Copyright statement

No part of this publication may be reproduced, stored in a retrieval system, or transmitted in any form or by any means, whether electronic, mechanical, photocopying, recording, or otherwise without the prior writing of the publisher.

Printed in Taiwan, March 2003

WLAN Adapter Quick installation Guide

Note: Do not insert the Wireless LAN Adapter in your computer until you have finished installing the Utility and Driver.

Utility and Driver Installation

1. Turn “On” your computer. Insert the driver CD for the **Wireless LAN Adapter** .The screen shown below will appear.
2. Click “Install Config Utilities.”

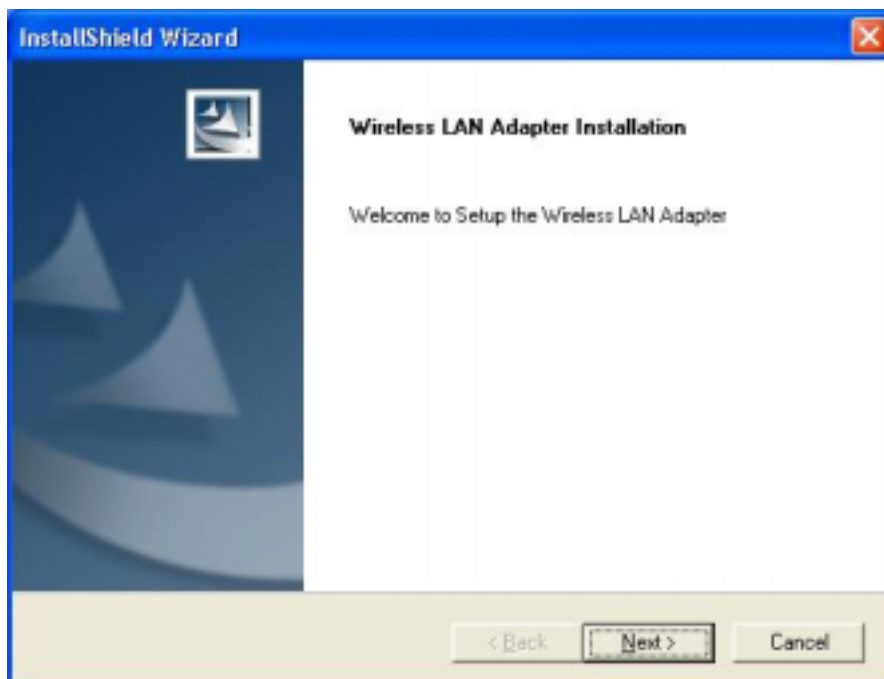


*** Note: If the screen does not appear, you probably have the CD autoplay function disable. Please run the autorun.exe from the CD.**

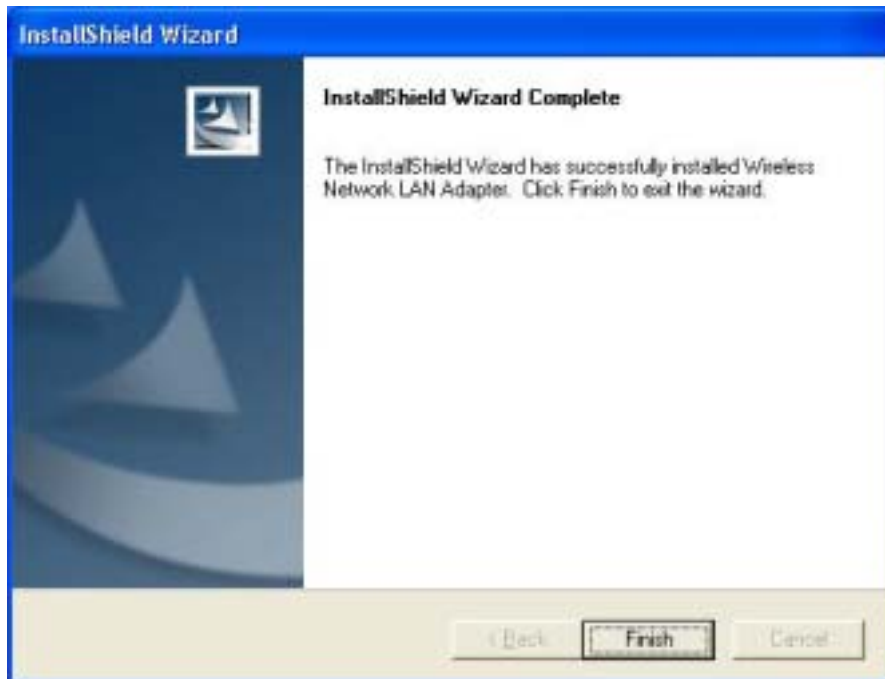
3. Click on the yellow bar with your product model name on it.



4. Click “Next” and then follow the instructions on the screen to continue the installation.



5. Click the Finish button in this screen; both the driver and the Configuration Utility are installed on your computer.



Hardware Installation

For PCMCIA or USB adapters, simply insert or connect the adapter after running the setup file.

For PCI cards, you must shut down the computer, install the card in an available PCI slot, and restart the operating system.

After the computer boots back up, it will detect the wireless card and then start the New Hardware Found wizard. Respond to the prompts displayed by the wizard, **but do not check the load driver from Specify Location check box**; the operating system will find the driver automatically.

You can launch the Configuration Utility by clicking the left mouse button on the Configuration Utility icon and selecting Advanced Configuration.



If the Configuration Utility icon is not displayed in the System Tray, you can restart the Configuration Utility from the Start Menu by selecting Programs and WLAN-Utility Configuration.

The Configuration Utility consists of window with four tabs: Link Status Connections, Profile Setting, and About. Please find information about these tabs in the User's Guide (from the CD Auto-run menu, select User's Guide and then select the product)

Wireless Network Setup

- 1. Peer-to-Peer:** Connects with other wireless client(s). This does not require Access Point. Please make sure the “Network Name” (SSID or ESSID) and “Peer-to-Peer” channel are the same for all clients in the same wireless network. Double click on the Configuration Utility icon to open the utility.
 - Click on “Profile Setting” tab and “Add” to create a new profile.
 - Enter a name that the profile correspond, click “Next”.
 - Enter a name for the Network, at “Network Type”, click on the drop-down arrow and select “Peer-to-Peer”, and then at “Peer-to-Peer Channel”, use the up/down arrows to select the channel number, and then click “Next”.
 - Select if “64 bits” or “128bits” to enable the “Encryption”. Click “Next”
 - On IP Setting select “Enable” or “Disable” to make used of it. Click “Complete” to finish the configuration.



- 2. Access Point:** Connects to wired Ethernet network via Access Point.
 - Click “Available Networks” tab.
 - Select the listed Wireless Network to Join.
 - Click “Connect” to join the network.

* Note: You might need to configure a Profile before if the destination network had a “WEP KEY” protected.