

Network USB over IP Server With 1-USB2.0 Port

User Manual

V1.0

TABLE OF CONTENTS

COPYRIGHT	4
1. INTRODUCTION	5
PRODUCT OVERVIEW	5
COMPONENTS AND FEATURES	5
HARDWARE INSTALLATION.....	5
2. THE SOFTWARE INSTALLATION.....	6
FOR WINDOWS 2000/XP USERS	7
FOR WINDOWS VISTA USERS	20
3. WEB MANAGEMENT INTERFACE.....	29
FOR WINDOWS 2000/XP USERS	29
FOR WINDOWS VISTA USERS	29
WEB PAGE DESCRIPTION	30
4. TROUBLESHOOTING	33
FREQUENTLY ASKED QUESTIONS	33

Trademarks

Windows 2000/XP/Vista are registered trademarks of Microsoft Corp. All other brands and product names are trademarks of their respective companies.

Copyright

No part of this publication may be reproduced in any form or by any means or used to make any derivative (such as translation, transformation or adaptation) without the express written consent of the manufacturer as stipulated by the United States Copyright Act of 1976.

FCC Warning

This equipment has been tested and found to comply with the limits for a Class B digital device, pursuant to subpart J of Part 15 of the FCC Rules. These limits are designed to provide reasonable protection against harmful interference when the equipment is operated in a commercial environment. This equipment generates, uses, and can radiate radio frequency energy and, if not installed and used in accordance with the instruction manual, may cause harmful interference to radio communications. Operation of this equipment in a residential area is likely to cause harmful interference in which the user will be required to correct the interference at their own expense.

All contents are subject to change without prior notice.



Part No. US8810U2-V1.0

1. Introduction

Product Overview

The Network USB over IP Servers enhance capability by letting you place your USB devices at convenient locations directly on the Ethernet network. It's designed to connect your USB printers, MFP, and USB storage devices to your network, allowing all network users access to these USB devices remotely.

Network Management

The Network USB over IP servers support the WEB management, which remote management and a warning. A standard WEB server is permanent on these Network USB over IP Servers. Any standard WEB browser can be used to access and manage these Network USB over IP servers.

Components and Features

1-USB2.0 Port Network USB over IP server

- 1 USB2.0 port (High-speed)
- Fast Ethernet network port: RJ-45 for 10Base-T or 100Base-TX
- 1 LED to indicate Status, 2 LED's to indicate 10/100M link lights
- One Setup CD for Windows 2000/XP/Vista, User's Guide
- One external AC power adapter
- Built-in Reset Button

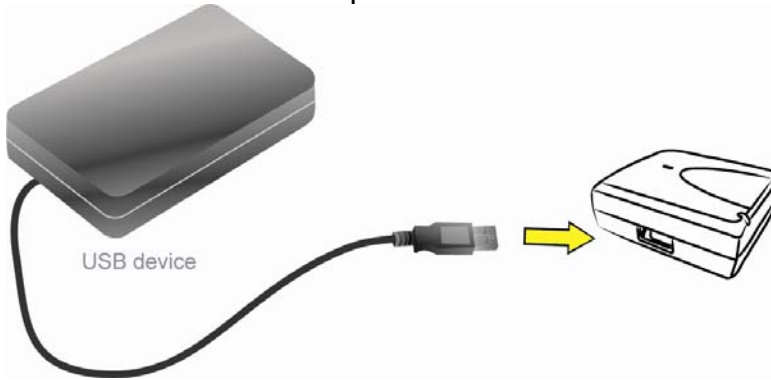
Before you start, you should prepare:

- One Windows 2000/XP/Vista computer with CD-ROM drive
- One USB devices with USB port

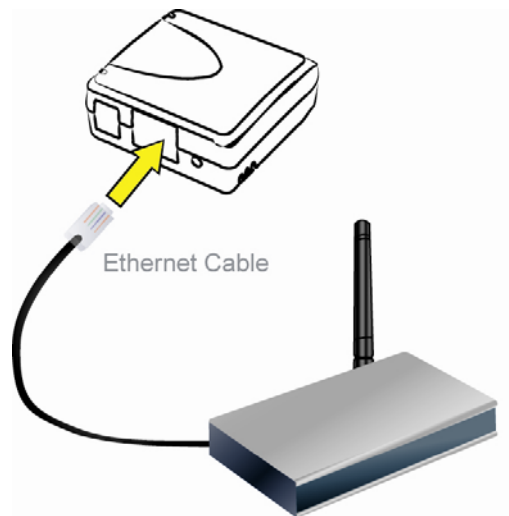
Hardware Installation

Make sure that your USB devices are switched off and that the Network USB over IP Server's power adapter is disconnected.

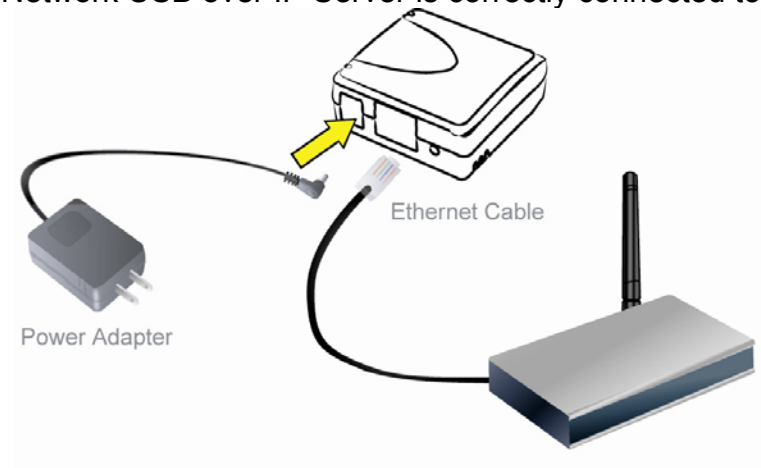
1. Connect your USB device to the USB port of the Network USB over IP Server.



2. Connect the Network USB over IP Server to the router or switch/HUB with the Ethernet cable.



3. Connect the power adapter to the Network USB over IP Server. When the Link LED lights up, the Network USB over IP Server is correctly connected to the network.



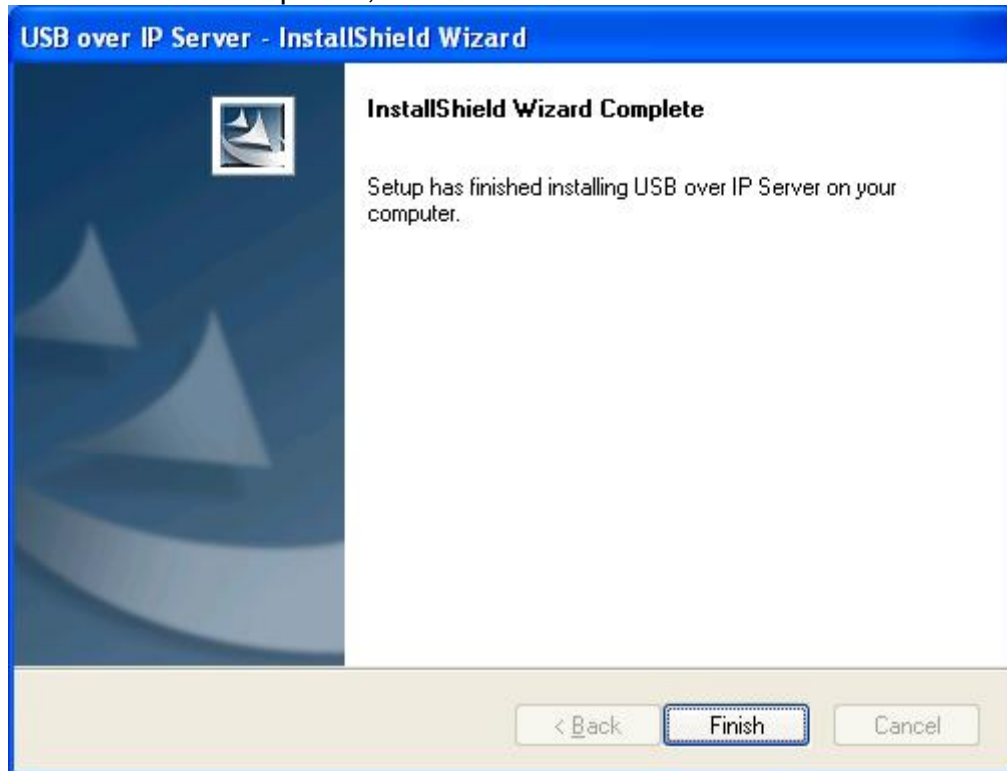
2. The Software Installation

For Windows 2000/XP Users

1. Insert the setup CD into your computer. A welcome screen should appear with a menu of options, including the option to install the proper Network USB over IP Server software, access the User Manual, or Exit out of the welcome menu.
2. The installation wizard will start the installation process; click **“OK”** to continue.



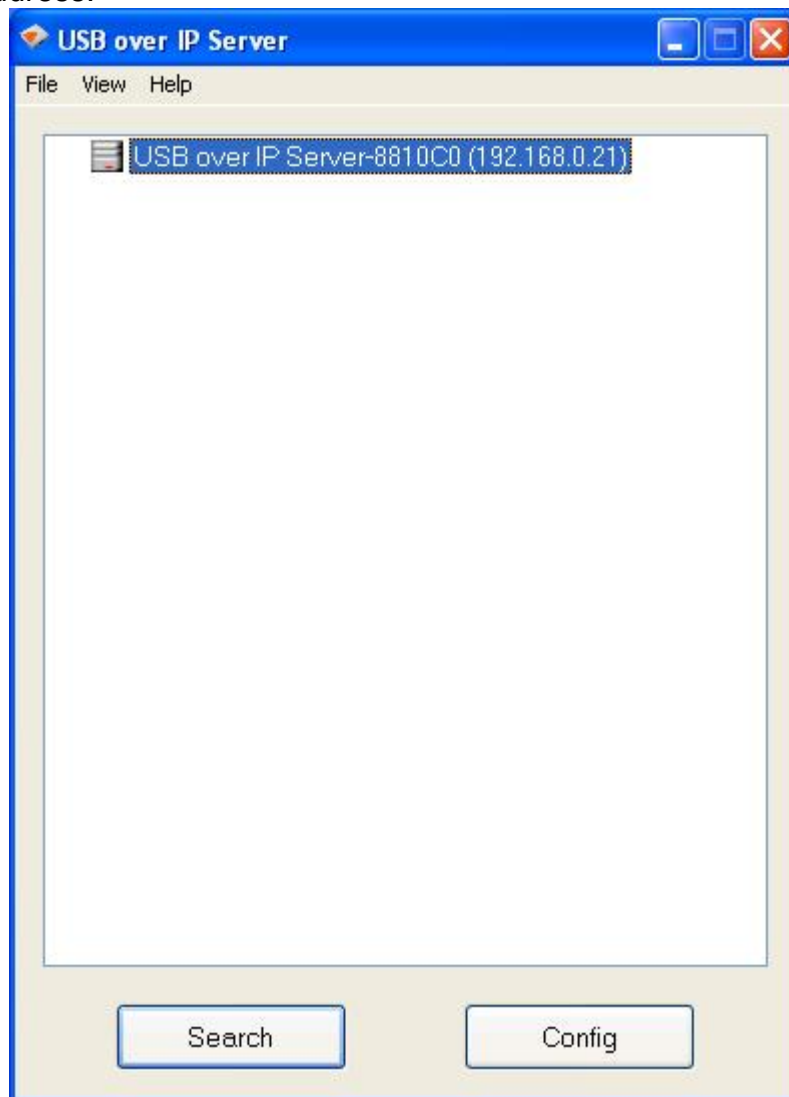
3. When the installation completed, click **“Finish”** to close the installation wizard.



4. On your desktop you will see a new icon, double-click the icon and it will bring up the Network USB over IP Server setup utility.

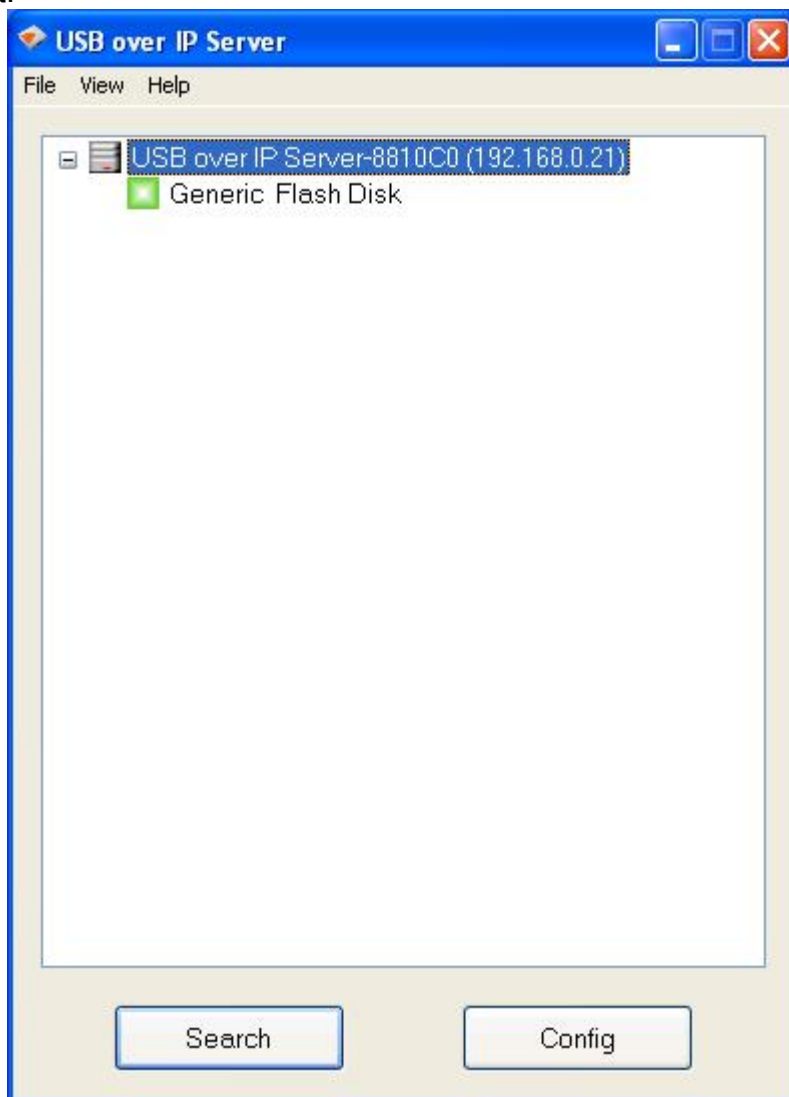


5. The setup utility will show up and display all the active Network USB over IP Servers on your network. In this screen, you will see the product listed as “**USB over IP Server-8810C0(192.168.0.21)**”. The “8810C0” is the last 6 digits of the Network USB over IP Server’s MAC address, and the “192.168.0.21” is the Network USB over IP Server’s IP address.



Connecting to an USB Device

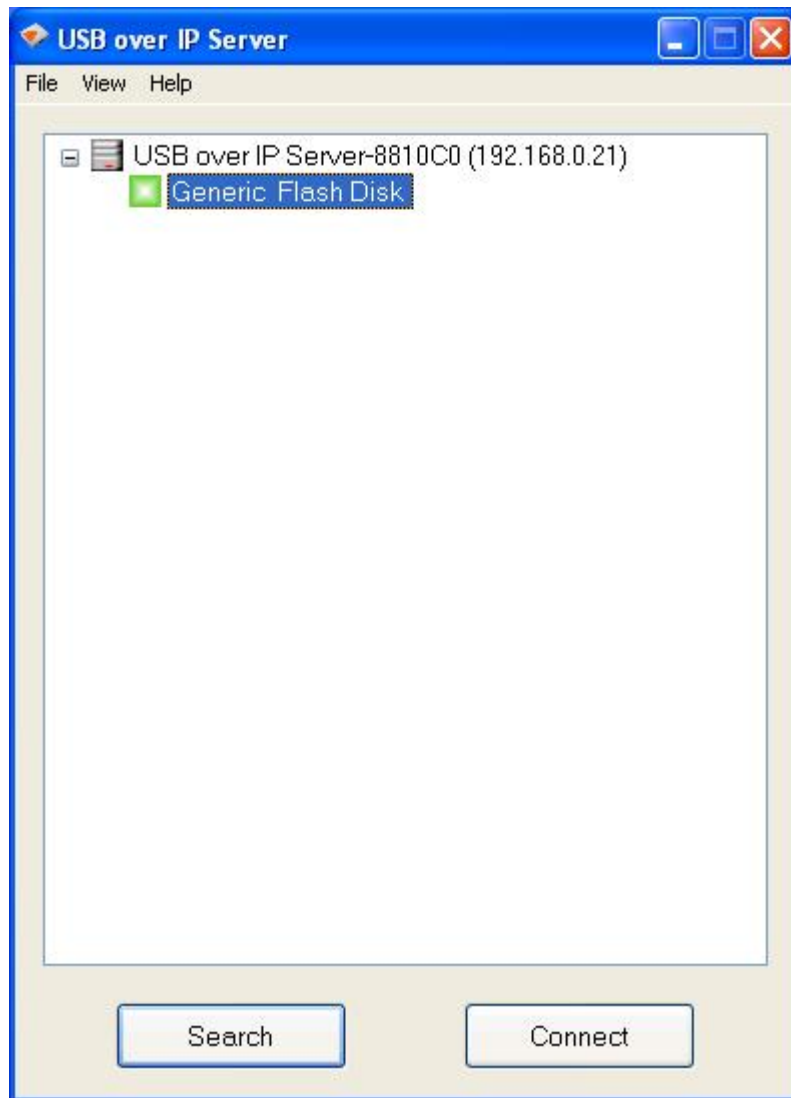
1. Connect the USB cable on your USB device to the USB port of the Network USB over IP Server, and make sure both the USB device and the Network USB over IP Server are powered on. The USB device will then show up on the Network USB over IP Server utility as a green icon. The green icon indicates that the USB device is ready to be connected. If for any reason the USB device does not show up, please click the “**Search**” button to refresh the list.



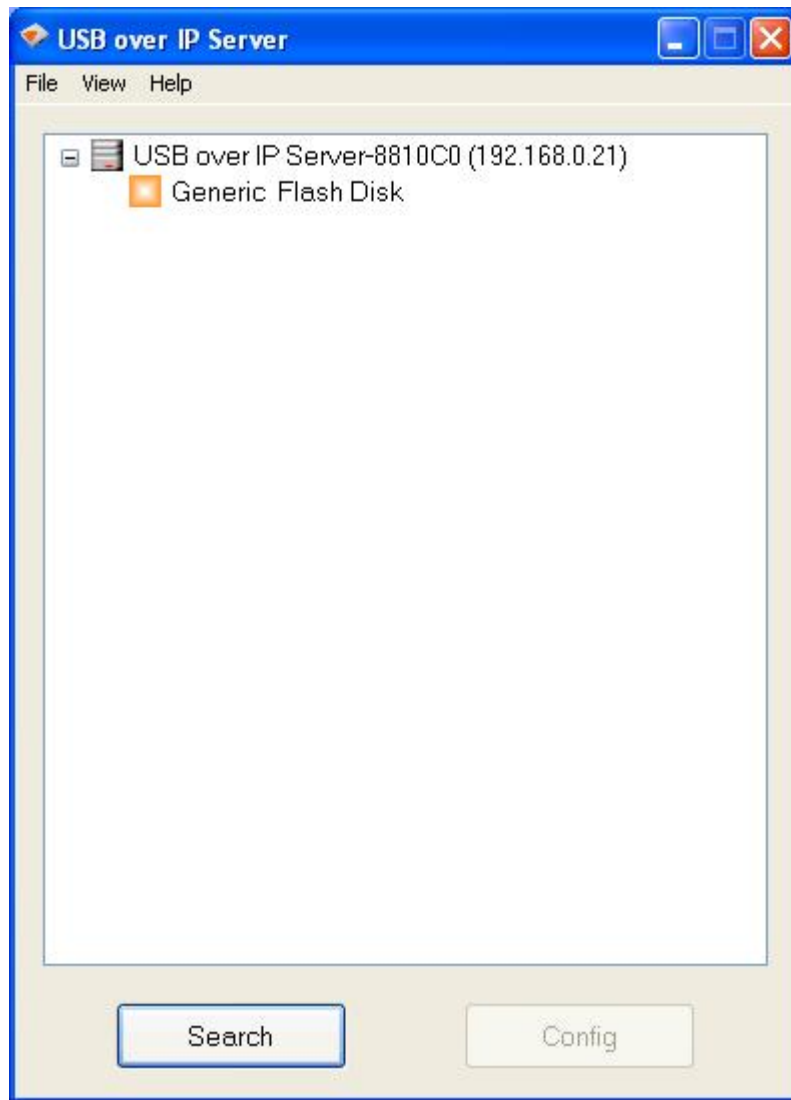
Note:

If your USB device does not show up on the list, please try to disconnect and reconnect the USB device to the USB port of the Network USB over IP Server. Also, please make sure the Network USB over IP Server and your USB device are powered on.

2. Select the USB device that you will want to connect and click on the “**Connect**” button at the bottom.

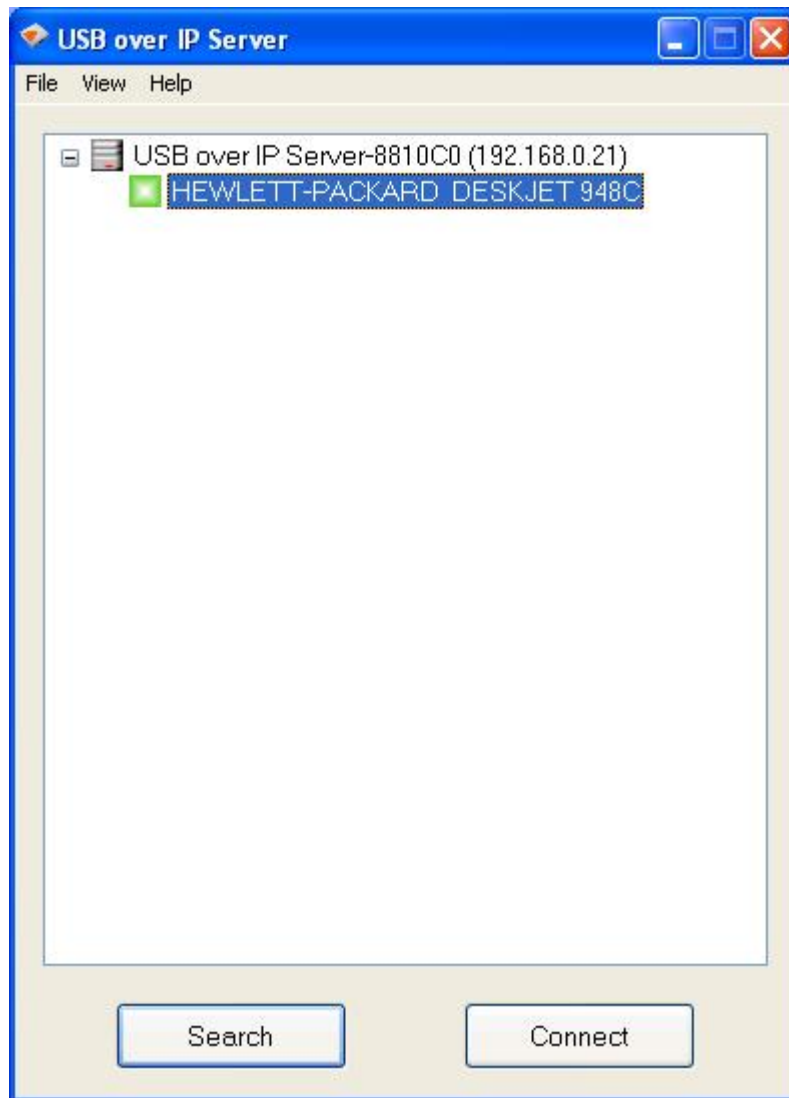


3. Once the USB device has been connected, the green icon(+) will turn orange(+) to indicate that the connection has been established. The USB device now becomes available on your computer, and you can use this USB device as if it was directly connected to your computer.



Connecting to an USB Printer or Multi-functional Printer

1. Connect the USB cable on your printer or multi-functional printer to the Network USB over IP Server and make sure your printer is powered on. You will then see the connected printer show up in the USB over IP Server setup utility. Select the printer from the list and click on the **"Connect"** button.



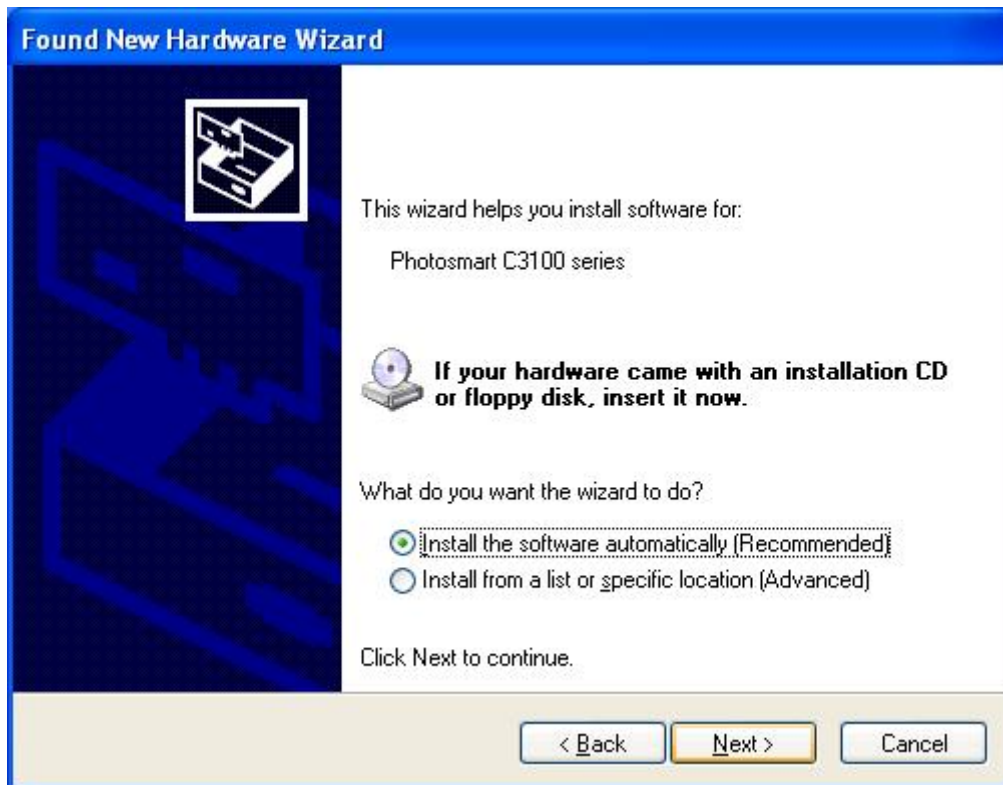
Note:

If your printer does not show up on the list, please try to disconnect and reconnect the printer to the USB port of the Network USB over IP Server. Also, please make sure the Network USB over IP Server and your printer are powered on.

2. The printer will be detected as if it was plugged directly into your computer.



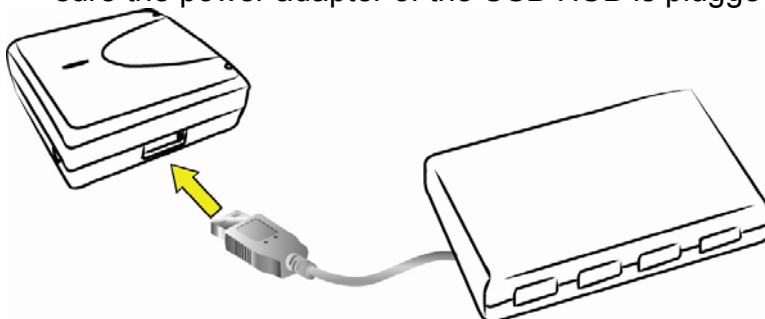
3. If this printer is connected to your computer for the first time, then you will need to complete the setup wizard for the printer software and driver installation. Please follow the wizard to setup the printer. Make sure you have the correct CD or drivers for your printer and follow the on-screen steps in the wizard. Once the wizard is completed, you will be able to use the printer as if it was directly connected to your computer.



Note:
Please refer to your printer user manual on how to setup your printer on the computer.

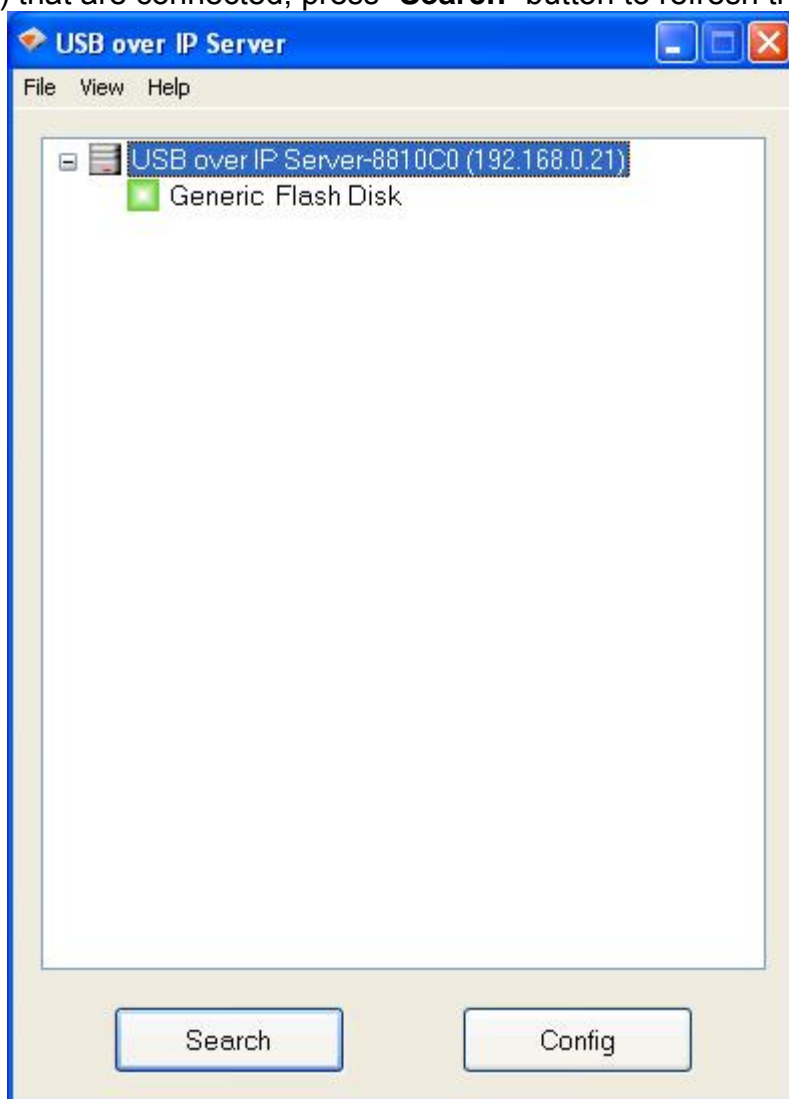
Connecting to an USB HUB

1. If you have more than one USB device that you would like to share over your network, you may add an USB HUB(4-port maximum) to the Network USB over IP Server.
2. Connect the USB cable of the USB HUB to the USB port on the Network USB over IP Server, and then connect the USB device(s) to the USB ports on the USB HUB. Make sure the power adapter of the USB HUB is plugged in and powered on.



Note:
Network USB over IP server can only support up to 4 USB devices through an USB HUB and certain USB devices require a direct connection to your computer in order to function at full capacity.

3. After the USB device(s) are connected to the USB HUB, the Network USB over IP Server setup utility will automatically display the connected USB device(s). If you do not see the USB device(s) that are connected, press “**Search**” button to refresh the list.

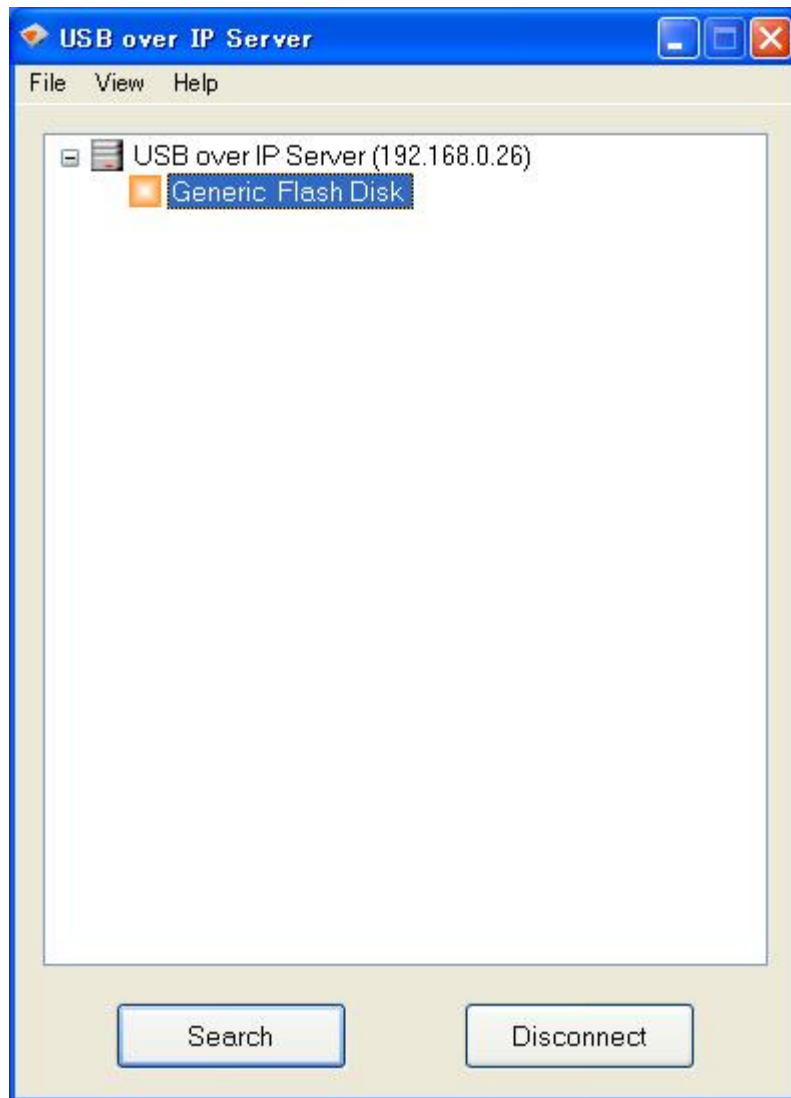


Note:

If your USB device does not show up on the list, please try to disconnect and reconnect the USB device to the USB HUB. Also, please make sure the Network USB over IP Server and your USB HUB are powered on.

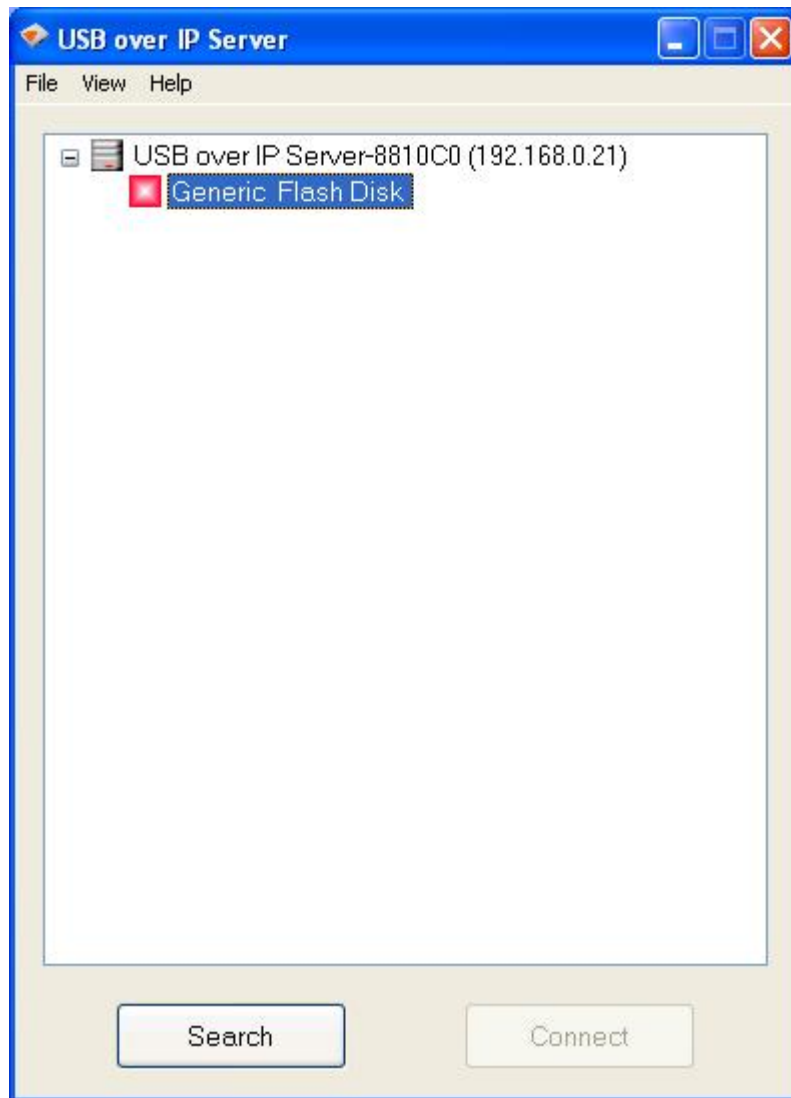
Disconnecting an USB Device

1. To disconnect an USB device, simply click on the connected USB device on the list of the Network USB over IP Server setup utility, and press the “**Disconnect**” button. The device will then no longer stay connected to your computer, however, you may reconnect the USB device again once the icon becomes green(■).

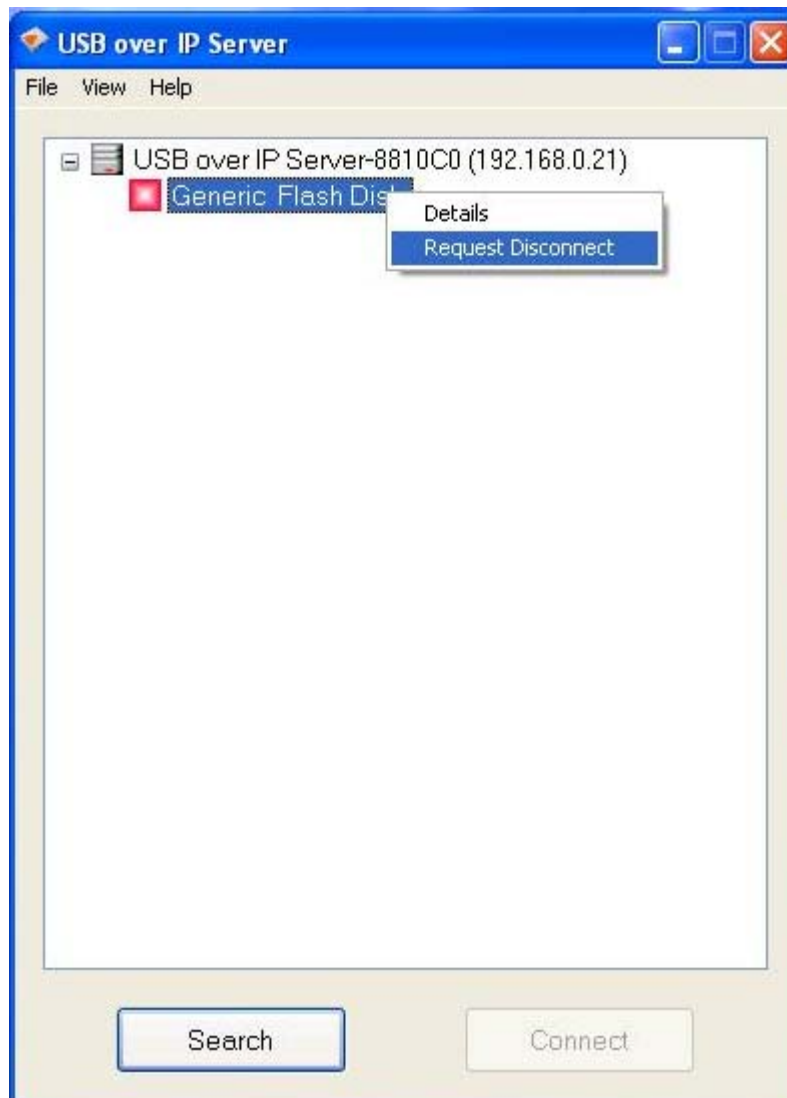


Request to Disconnect

1. If the USB device is being used by another computer on your network, a red icon(🔴) will be displayed in front of the USB device name. You will not have the option to disconnect the USB device; however, you may send a courteous message to request that the other user disconnect/release the USB device.



2. To send the courteous message, right-click on the USB device and select “**Request Disconnect**”. A message will then be sent to the user requesting that they disconnect from the USB device.



Note:

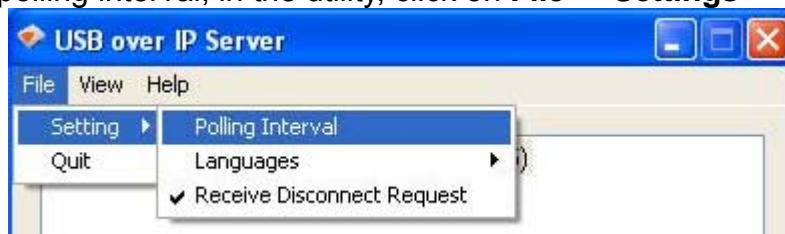
If the occupying user denies this request, then you will not be able to send any further requests to the same user for 5 minutes. This is to prevent any user from flooding the occupying user will multiple requests within a short period of time.

The chart list below shows what each colored icon means in the configuration software.

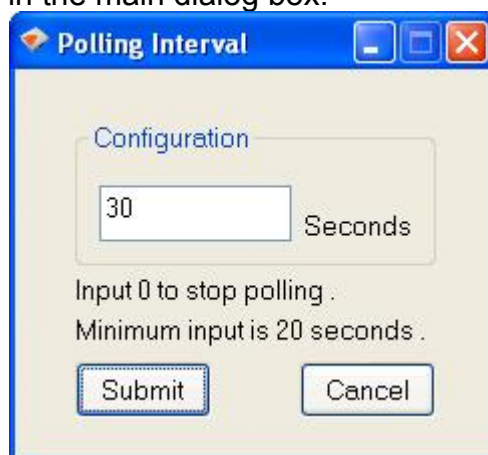
	USB device is available and ready to be connected
	The device is not connected but has some type of problem such as out of ink
	USB device has been established and is now connected
	Error with USB device. Example: out of paper
	USB device is in use by another user.
	Problem with a USB device occupied by another user
	Unsupported USB device
	USB server is on a different network segment. USB device can not be connected.

Setting the Polling Interval

1. The polling interval will allow the setup utility to pull information from your network to find out the status of all connected Network USB over IP Server and USB devices. To configure the polling interval, in the utility, click on **File -> Settings -> Polling Interval**.

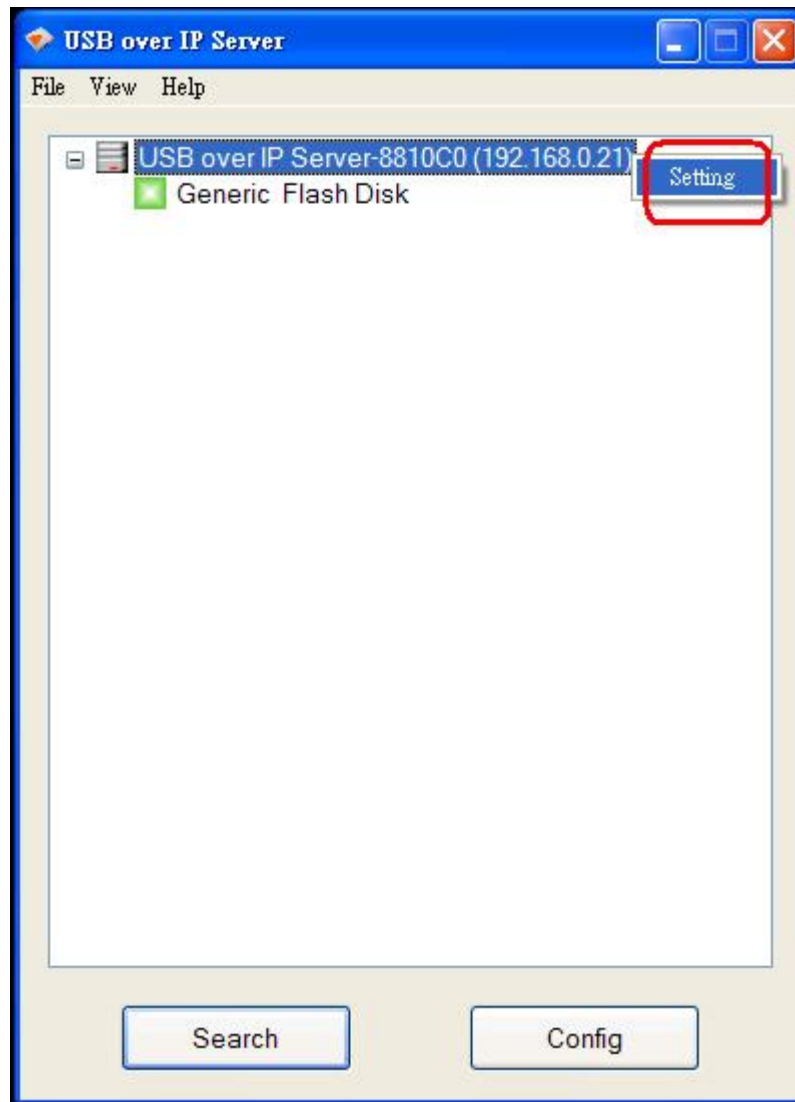


2. You may set a number in the “**Seconds**” box. Click on “**Submit**” to allow the new interval setting to take effect. Once you have set a number, the utility will automatically update any changes made to server in the main dialog box.

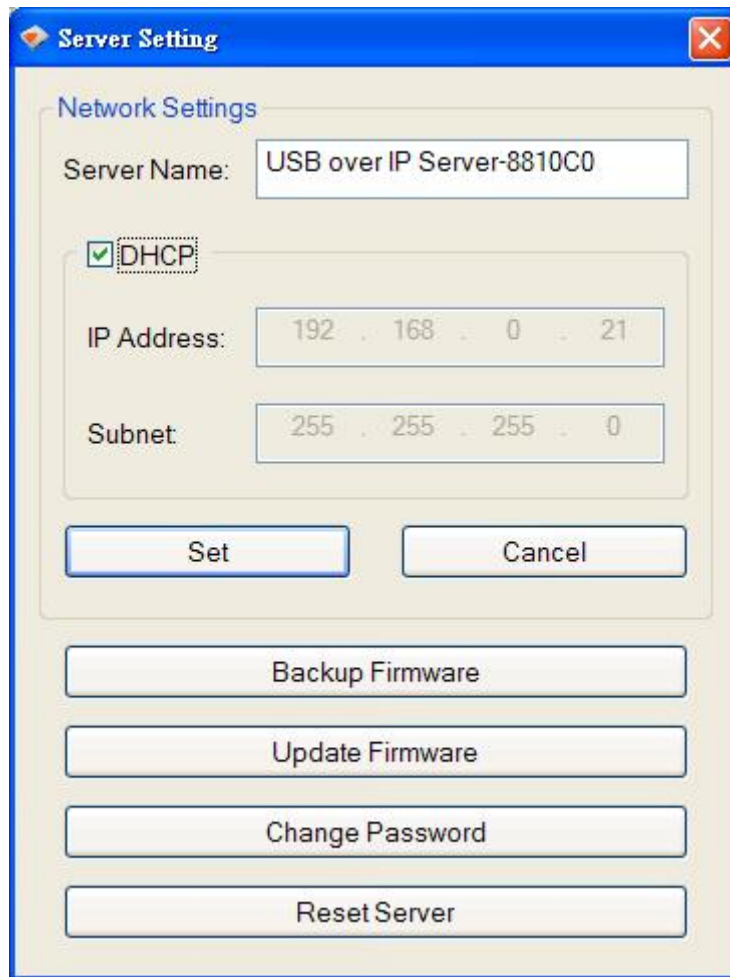


Setting the Network USB over IP Server by Setup Utility

1. To configure the Network USB over IP Server by setup utility, right-click on the USB over IP Server and select “**Setting**”.



2. A Server Setting window will be displayed. You may set the DHCP(default), IP address and password. Moreover, you can upgrade the firmware and reboot the Network USB over IP Server.



For Windows Vista Users

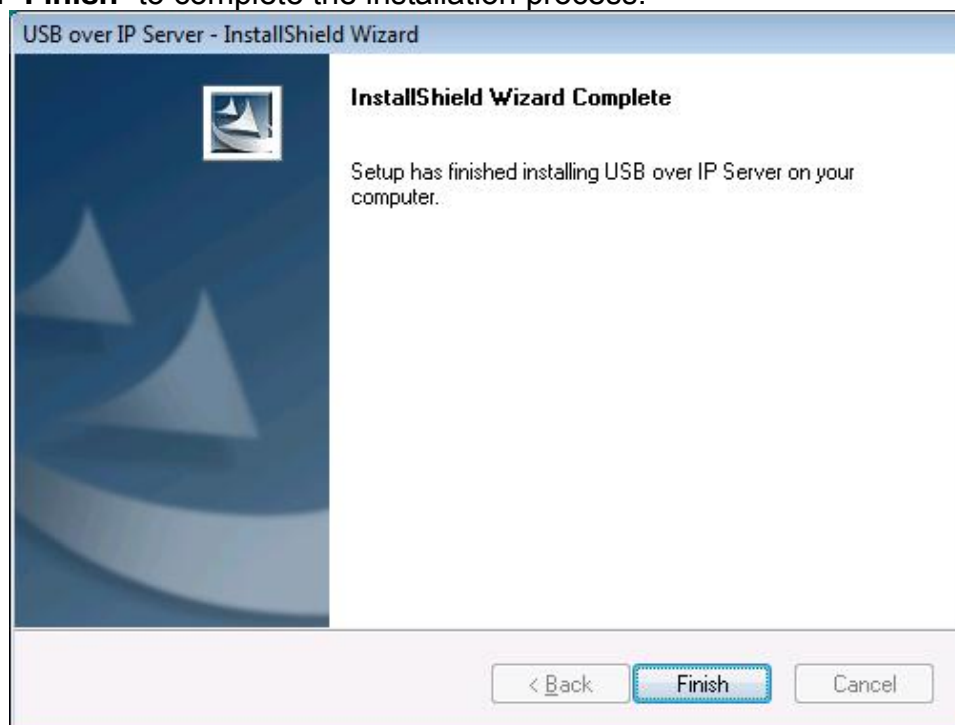
1. Insert the setup CD into your computer. A welcome screen should appear with a menu of options, including the option to install the proper Network USB over IP Server software, access the User Manual, or Exit out of the welcome menu.
2. Click **“OK”** to start the installation process



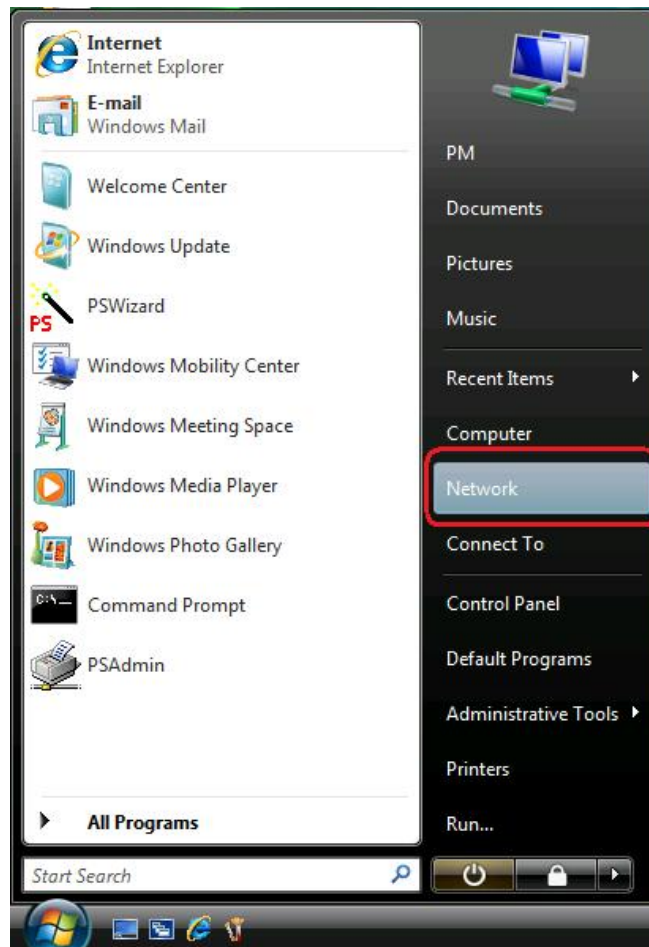
3. During the driver installation, a Windows Vista security message will appear. Select **“Install this driver software anyway”** to continue.



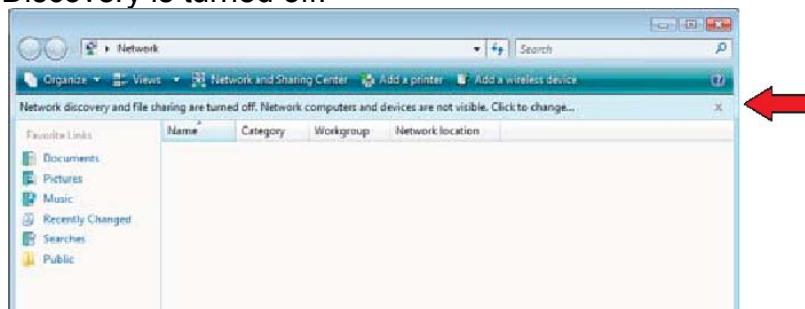
4. Click on "**Finish**" to complete the installation process.



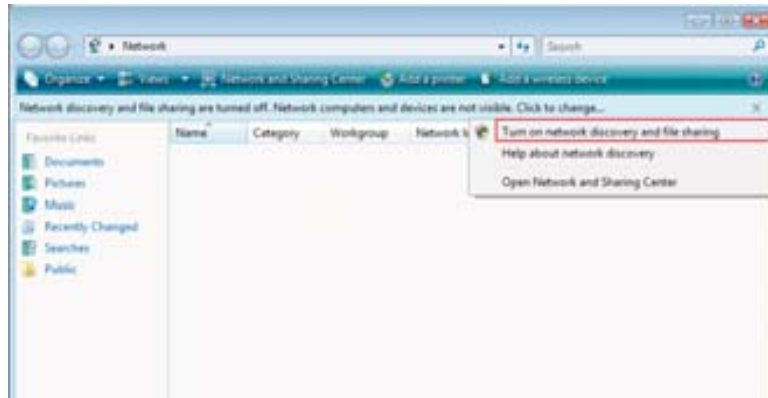
5. Once the installation process has been completed, you will need to go to the **Network** window to configure the Network USB over IP Server. To do so, click on your screen and select **Network** from the right-hand side of the menu.



6. The Network USB over IP Server icon will appear under other devices on the **Network** window. If the Network USB over IP Server or any other network icons in the network window do not appear, then a message will show up across the network screen indicating that Network Discovery is turned off.



7. To turn Network Discovery on, right-click on the message, then select **“Turn on network discovery and file sharing”** from the list. Once Network Discovery has been enabled, you will be able to see the Network USB over IP Server icon under **Other Devices**.



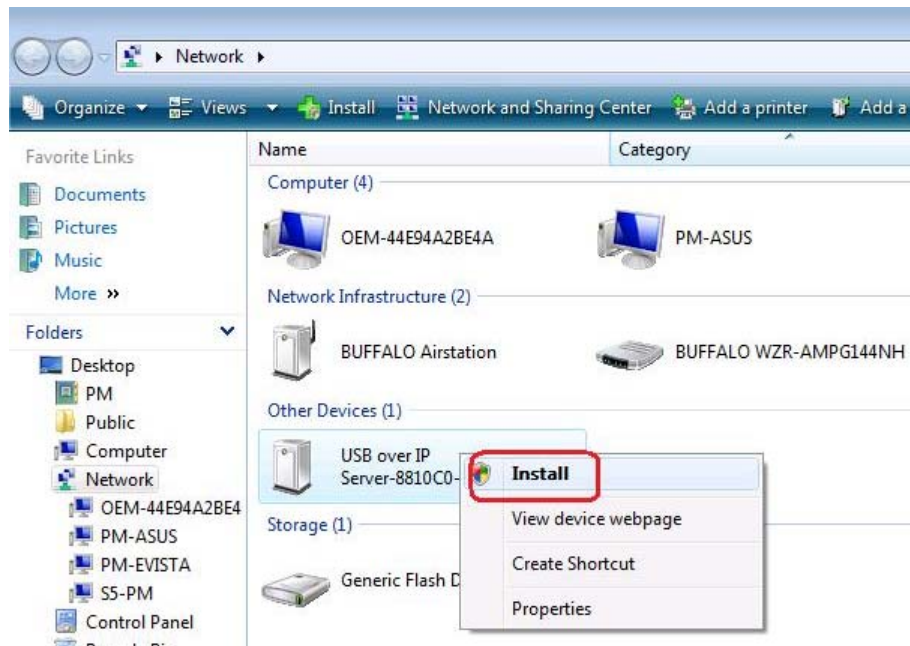
Note:

If you are prompted by a User Account Control message notifying you that **“Windows needs your permission to continue”** screen, please click on **Continue** to process

8. Select **“Yes, turn on network discovery and file sharing for all public networks”**.



9. Right-click on the **“USB over IP server.....”** icon, and select **“Install”** to begin using the Network USB over IP Server.

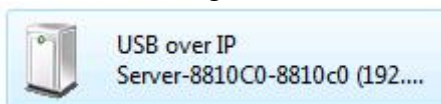


10. Click on the blinking window at the system tray which is prompted by the “**User Account Control**” permission window. Click Continue to proceed with the installation.

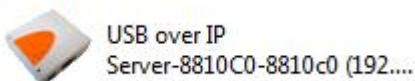


11. After the driver installation has been completed, the “**USB over IP server.....**” icon will change to a new product image. If the new product image icon does not change, press “**F5**” to refresh the Network window.

Before installing the driver



After installing the driver



You are now ready to use the Network USB over IP Server.

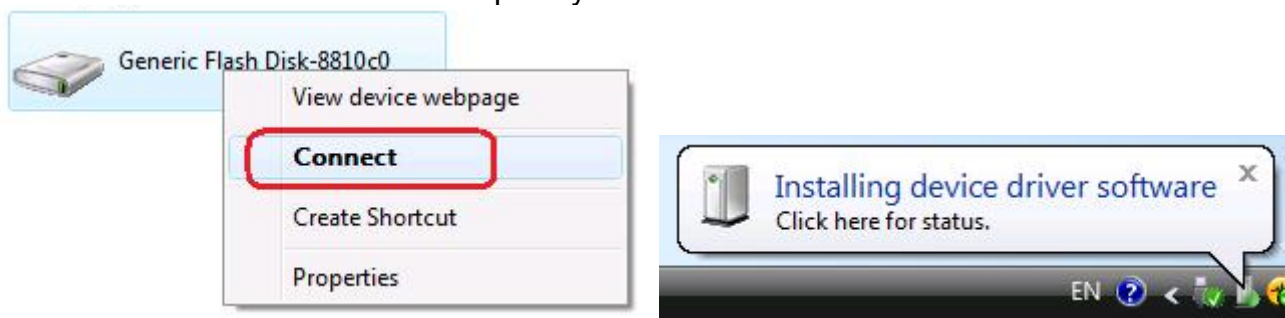
Connecting to an USB Device

1. After you have successfully installed the Network USB over IP Server driver, connect the USB device to the USB port of Network USB over IP Server and make sure both the USB device and the Network USB over IP Server are powered on.

2. When the USB device is connected, the Network USB over IP Server will detect the connection of the USB device, and an icon of the USB device will show up in the Network window. In this example, we have connected a USB flash disk.



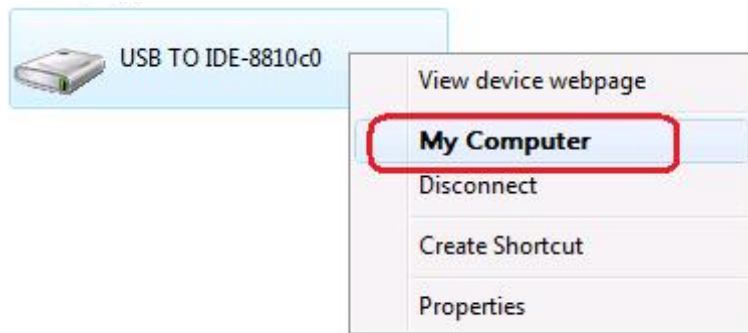
3. Right-click on the USB device that you will want to connect and select “Connect” to establish the connection. You will see the device driver is installing and the status will show at the bottom right corner on your system tray. This message will go away once the drivers have been installed completely.



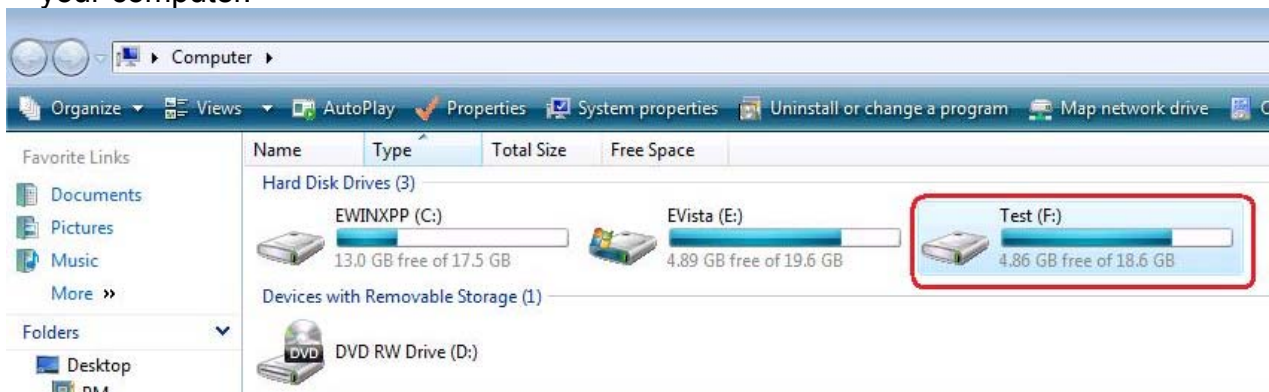
After the installation is completed, the USB device will become available as if it were directly connected to your computer.

Connecting to an USB Hard Drive

1. Connect the USB cable of the USB hard drive to the USB port on the Network USB over IP Server, and make sure both the USB hard drive and the Network USB over IP Server are powered on. After the USB hard drive is connected, the device icon will display in the Network window. Right-click on the device icon and select “**My Computer**” to bring up My Computer window. Or you may simply double-click the hard drive icon to bring up My Computer window.

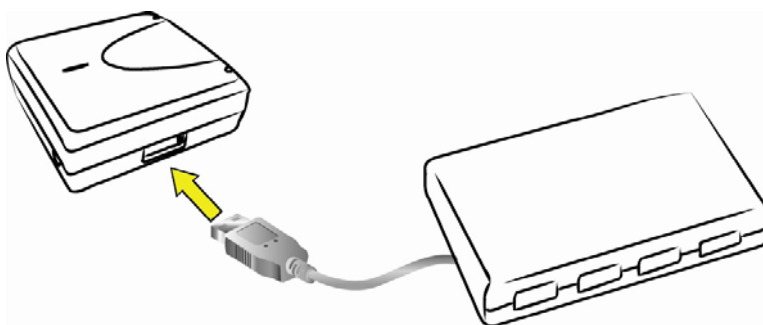


2. You will now see the external hard drive become available as if were directly connected to your computer.



Connecting to an USB HUB

1. If you have more than one USB device that you would like to share over your network, you may add an USB HUB(4-port maximum) to the Network USB over IP Server.
2. Connect the USB cable of the USB HUB to the USB port on the Network USB over IP Server, and then connect the USB device(s) to the USB ports on the USB HUB. Make sure the power adapter of the USB HUB is plugged in and powered on.



Note:

Network USB over IP server can only support up to 4 USB devices through an USB HUB and certain USB devices require a direct connection to your computer in order to function at full capacity.

Disconnecting an USB Device

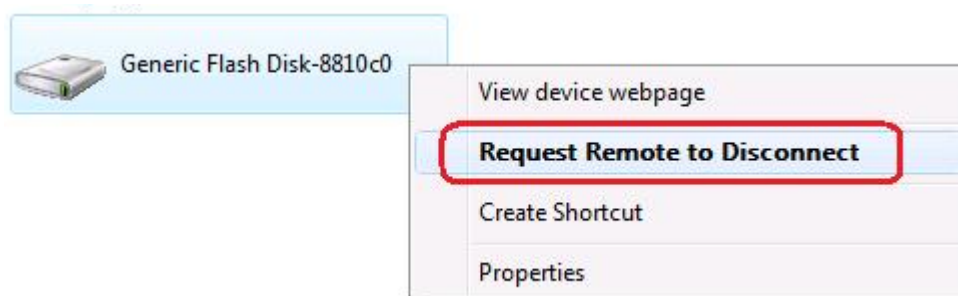
1. To safely disconnect an USB device under the Network window, right-click the USB device icon and select “Disconnect” from the menu. Once the USB device has been disconnected, it will no longer be connected to your computer, and you can unplug the USB cable of the USB device from the Network USB over IP Server.



If you would like to reconnect the USB device, simply right-click on the USB device icon. And then select “**Connect**” again to establish the connection.

Request to Disconnect

1. If you would like to use an USB device that is being occupied by another user, you may send a courteous message asking the user to disconnect/release the USB device. You may do this by right-clicking on the USB device icon, and then you can select “Request Remote to Disconnect”. A message will then be sent to the user requesting that they disconnect from the USB device.



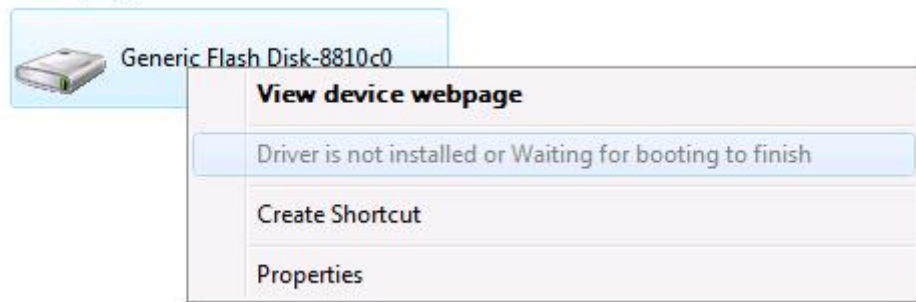
Note:

If the occupying user denies this request, then you will not be able to send any further requests to the same user for 5 minutes. This is to prevent any user from flooding the occupying user with multiple requests within a short period of time.

Remark:

After a system reboot, you might not be able to connect to any USB device for a short period of time. When right-clicking on an USB device, you will see the following message instead of the option to “**Connect**”.

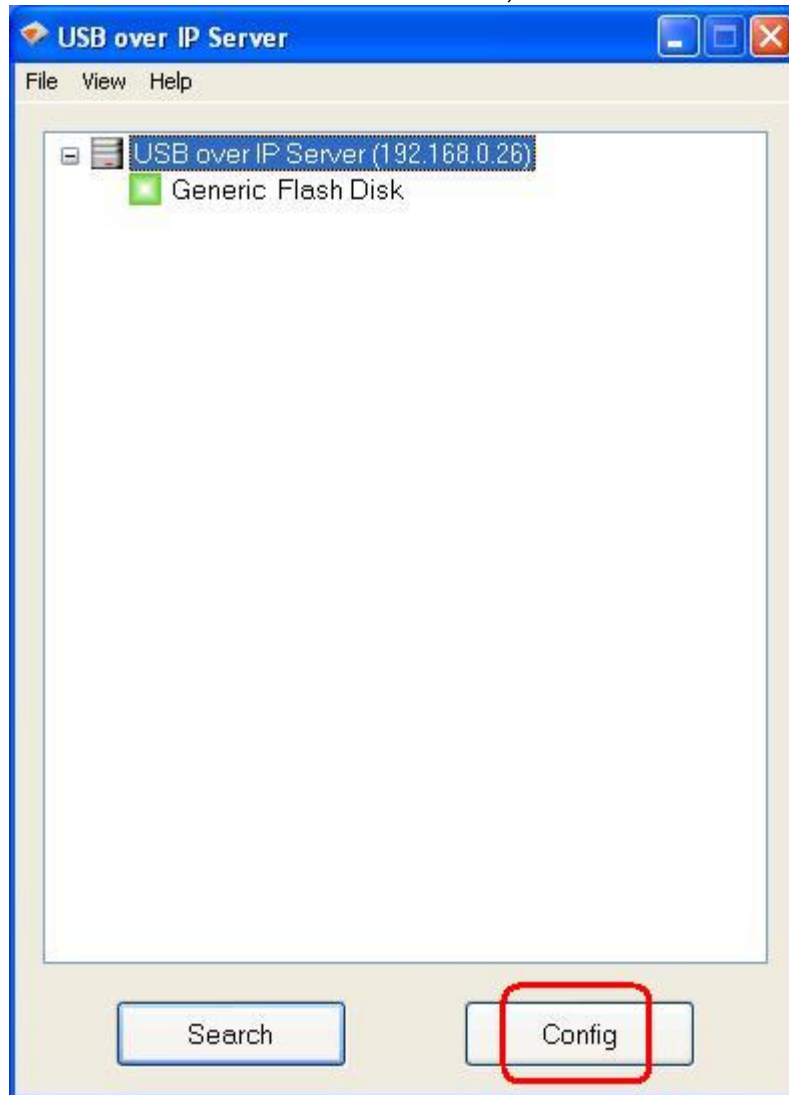
Depending on the performance of your computer and the number of active Network USB over IP Server on your network, it may take up to 3 minutes for your computer to recognize all Network USB over IP Server. This is because Windows Vista needs time to probe the entire network before it loads the necessary driver to run the Network USB over IP Server. Once the driver has been loaded, the option to “Connect” to the USB device will be made available when right-clicking an USB device



3. WEB Management Interface

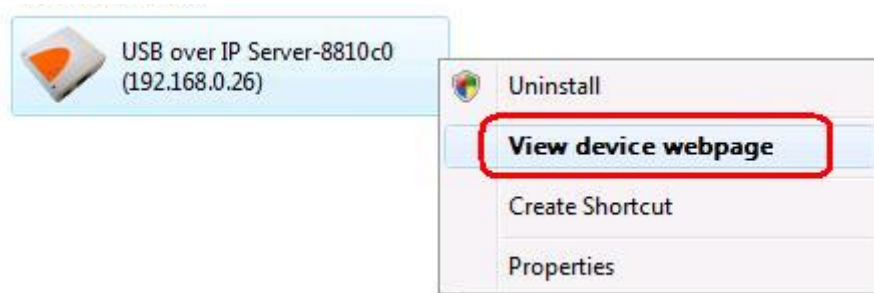
For Windows 2000/XP Users

To Access WEB management interface in Windows 2000/XP, in the USB over IP Server setup utility, select the USB over IP Server on the list, and click on the “**Config**” button.



For Windows Vista Users

To Access WEB management interface in Windows Vista, in the Network window, right-click on the “**USB over IP Server.....**” icon, and select “**View device webpage**”.

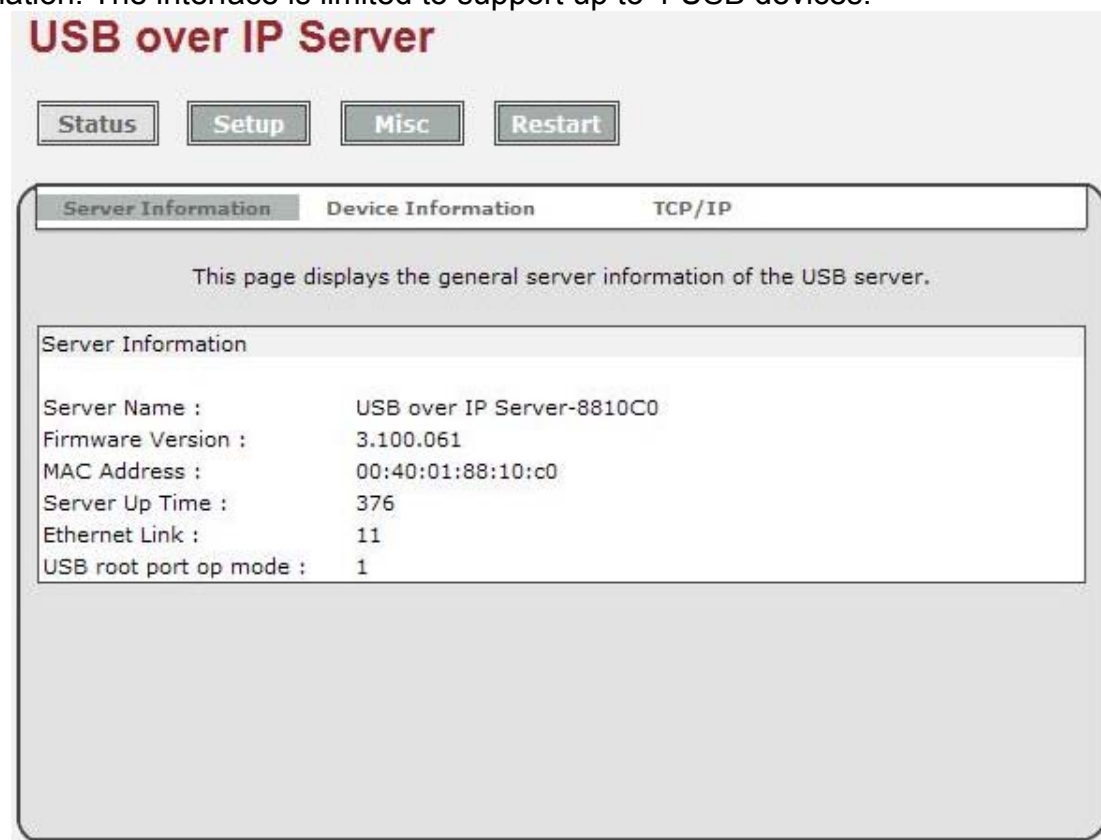


WEB Page Description

The left panel of the WEB management interface provides a list of different options to choose from.

Status:

Displays the current Network USB over IP Server, connected USB devices and IP address information. The interface is limited to support up to 4 USB devices.



Setup:

You can add or change any existing password on the Network USB over IP Server in this window. By default, the Network USB over IP Server does not come with a default password.

You can change the network settings according to your network specification. If you would like to give the Network USB over IP a static IP address, you will need to **Disable** DHCP in the “**DHCP Setting**” menu”. Once DHCP is disabled, enter the desired IP address on the IP

address field along with the subnet mask and click “**Save & Restart**” button to reboot the Network USB over IP Server.

Please note that if the Network USB over IP Server has a set password, you will need to enter it into the password field box.

The screenshot shows the 'USB over IP Server' web interface. At the top, there are four buttons: 'Status', 'Setup', 'Misc', and 'Restart'. Below these is a tabbed interface with 'Server Settings' and 'TCP/IP' tabs. The 'TCP/IP' tab is active, displaying a message: 'This setup page allows you to configure general system settings of the USB server.' Below this message is a section titled 'Server Settings' containing a 'Server Name' field with the value 'USB over IP Server-8810C0'. Another section titled 'Administrator's Password' contains three fields: 'Current Password', 'New Password', and 'Confirm New Password'. A red text label 'Must provide If Available' is positioned to the right of the 'Current Password' field. At the bottom of the form is a 'Save & Restart' button.

Misc:

Allow you to restore the Network USB over IP Server back to factory default.

And, the firmware link will allow you to upload the latest firmware on the Network USB over IP Server. Click on “**Browse**” to specify the firmware location on your computer. Once the location path of firmware has been set, click “**Firmware Upgrade**” to begin the update.

Please note that if the Network USB over IP Server has a set password, you will need to enter it into the password field box.

USB over IP Server

Status

Setup

Misc

Restart

Factory Default

Firmware Upgrade

- Click **Factory Default** then **OK** to reload all default settings in the USB server. Warning! All current settings will be erased.
- Click **Firmware Upgrade** to browse to your firmware directory and reload the USB server with new firmware.

Confirm Password

Password : Must provide If Available

OK

Restart:

The Restart window will allow you to reboot the Network USB over IP Server.

Please note that if the Network USB over IP Server has a set password, you will need to enter it into the password field box.

USB over IP Server

Status

Setup

Misc

Restart

This page allows you to restart the USB server.

Restart The USB Server

Do you want to save settings and restart the USB server now ?

Confirm Password

Password : Must provide If Available

OK

4. Troubleshooting

Frequently Asked Questions

1. How come I can't connect to my USB device to my computer through Network USB over IP Server?
 - Make sure the USB device functions normally when you plug it into your computer via USB cable.
 - If the USB device, such as USB printer or multi-functional printer, requires a driver, please make sure you have installed it on the computer you wish to use. Rebooting your computer after installing USB device driver might also help.
 - Although the Network USB over IP Server could work with a very wide spectrum of USB devices, it still has limited support on some USB devices. Please refer to the supported device list for details.
2. How come I can't see any servers on my Network USB over IP Server listing window after installing it?
 - Please make sure that all of your Network USB over IP Servers are correctly connected to your network. Also, certain anti-virus programs come with firewall functions that might prevent the Network USB over IP Server setup utility from accessing the network. Please make sure the Network USB over IP Server setup utility is not being blocked by your anti-virus program.
3. The connected USB devices are disconnected after my computer wakes up from the computer stand-by?
 - The connected devices will automatically be released for other network users in case you forget to release them. Please reconnect the USB devices again after your computer "wake up".