

# Dongle-sized Wireless Print Server

**ANSEL Model: 5009**



## Quick Installation Guide DWP1000

**(For Alpha Engineering Sample only)**

**V0.2**

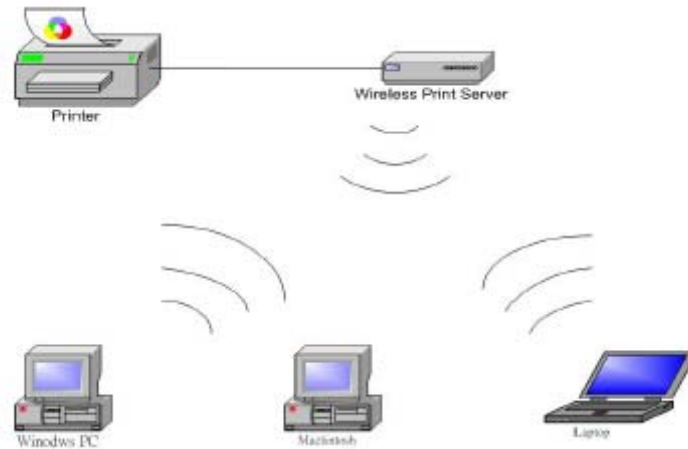
**Notice:** Current alpha sample is running for the printer compatibility test now.

It still has some unexpected issues need to be fixed by the upcoming firmware. So that, we strongly recommend you to keep the factory default in this sample when you start to evaluate it. Your kindly reply is very helpful for us to fine-tune our product. We'll update the new test firmware continually. Sorry for any inconvenience.

## Default Settings:

- Wireless Mode: Ad-Hoc (Peer-to-Peer)
- Channel: 6
- SSID: DWP1000-xxxx (xxxx is the last 4 digits of wireless print server's MAC address)
- IP Address: 192.168.0.10
- Subnet Mask: 255.255.255.0
- Gateway: 192.168.0.254
- Username: admin
- Password: 0000

## Ad-hoc (Peer-to-Peer) Mode



## Hardware Installation:

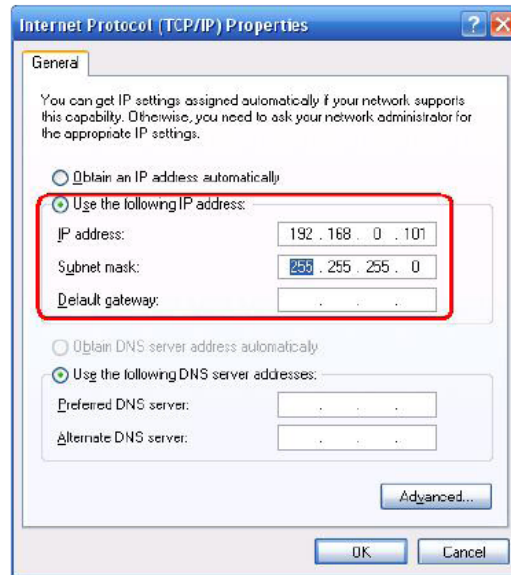
1. Turn off the printer's power.
2. Connect wireless print server into the printer's USB port. Use the included USB extension cable if necessary.
3. Connect the AC power plug into wireless print server.
4. Turn the printer's power on.

**Note:**

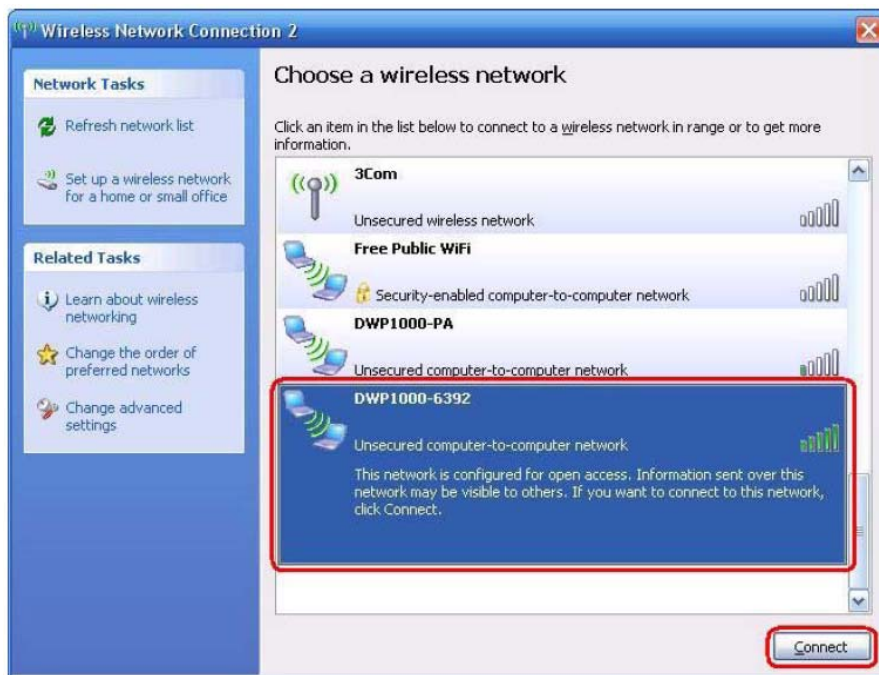
**Please connect your printer with computer locally, and then install printer driver in your system in advance.**

## Wireless Print Server Configuration (Wireless Ad-Hoc Mode):

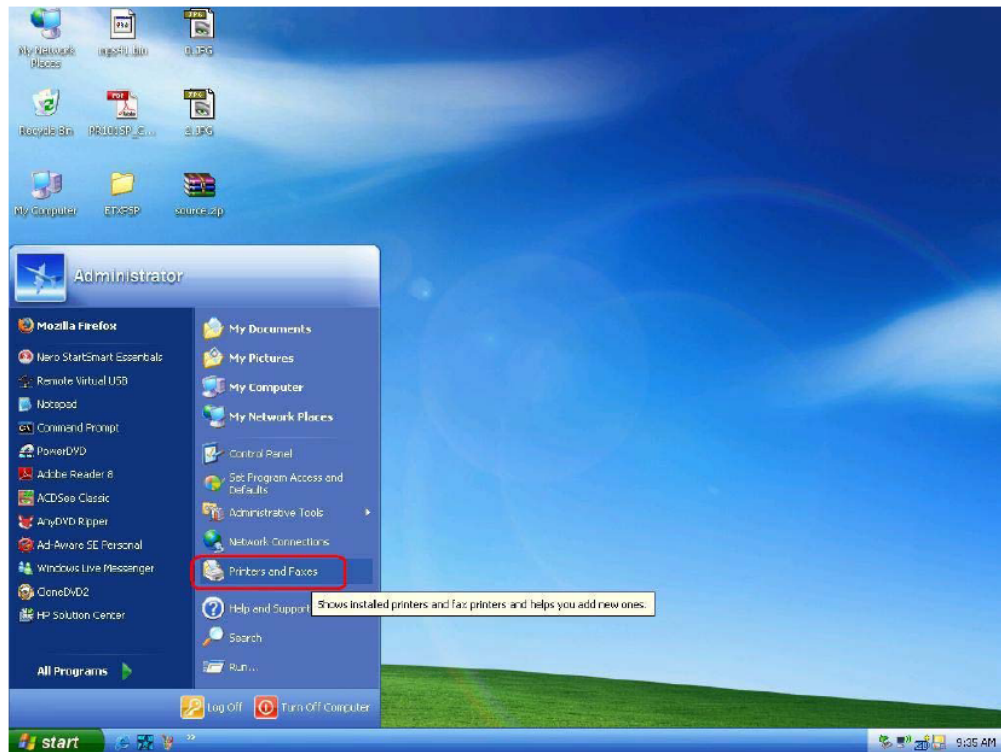
1. Please specify a proper IP address for your wireless adapter, e.g.192.168.0.101.



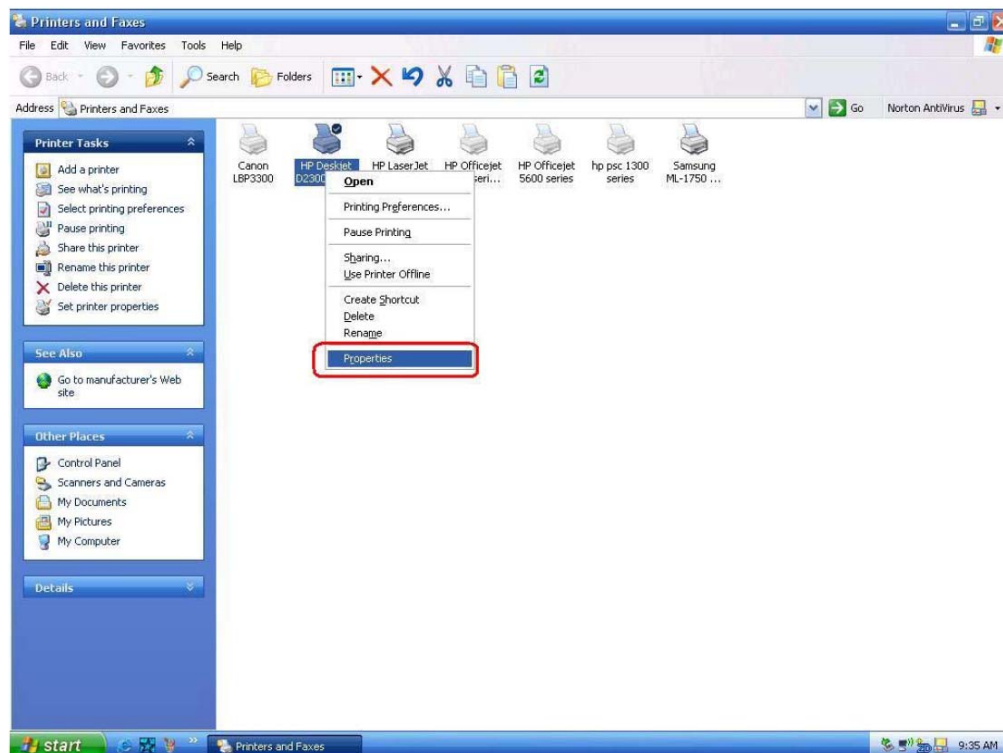
2. Find the wireless print server by Windows Zero Configuration or vendor utility of wireless adapter. Then click **Connect**.



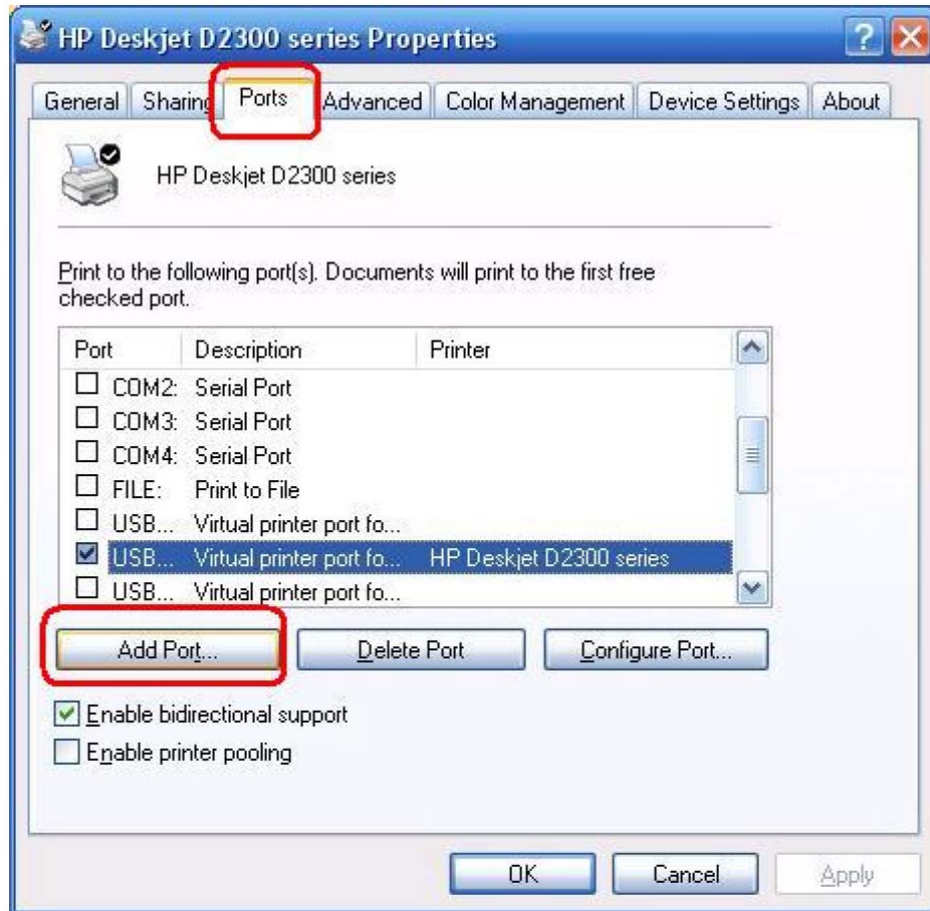
3. Click **start** -> **Printers and Faxes**.



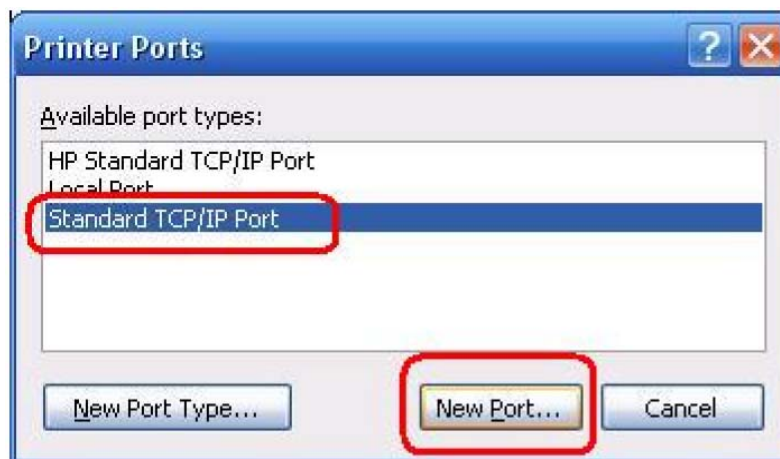
4. Highlight your newly installed printer. Right-click, select **Properties**.



5. Click **Ports** -> **Add Port**.



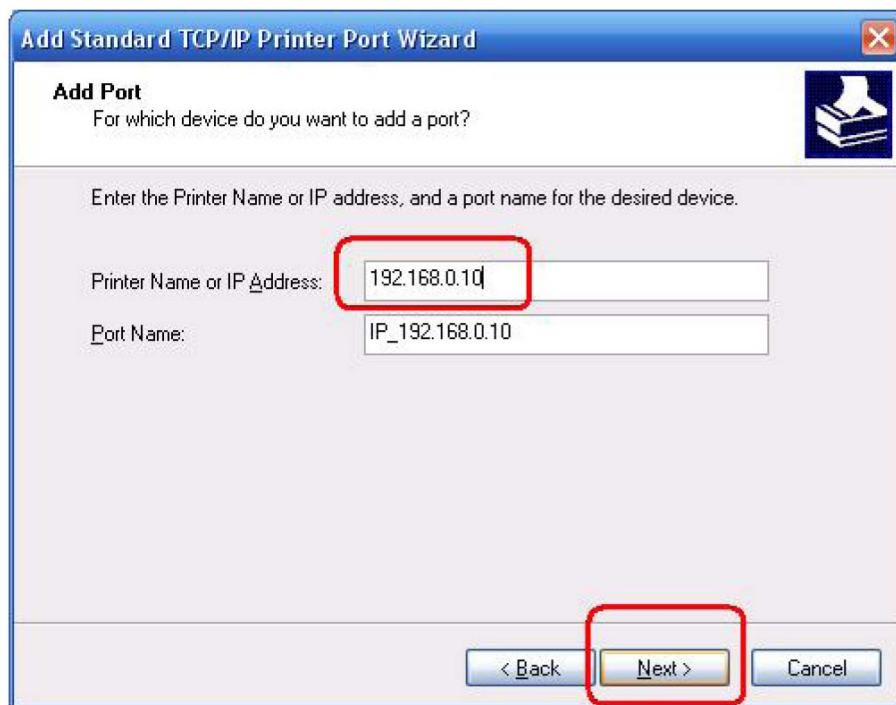
6. Click **Standard TCP/IP Port** -> **New Port**.



7. Click **Next**.

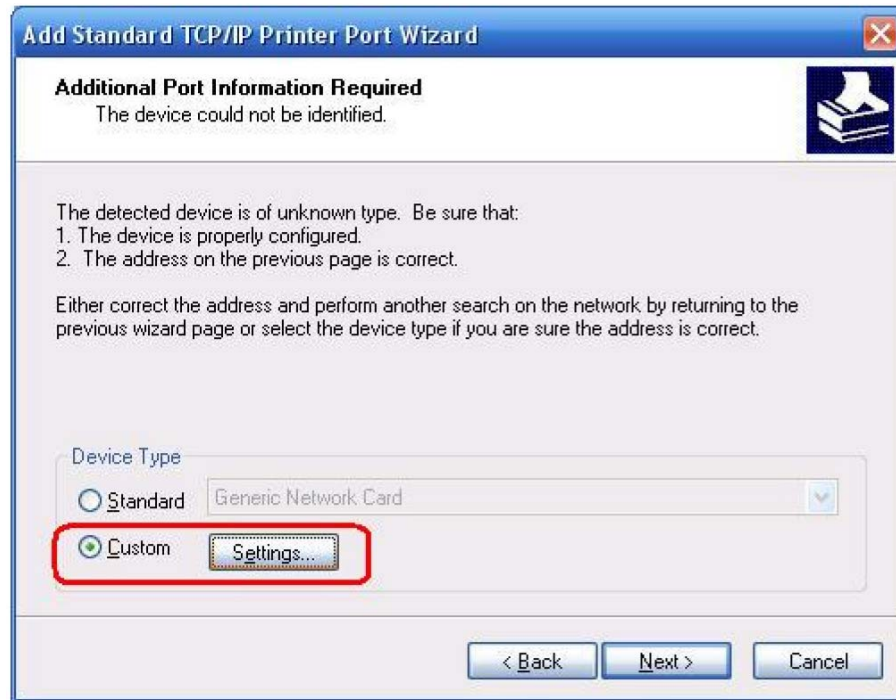


8. Input the IP address of wireless print server (default IP address is 192.168.0.10, and then click **Next**.

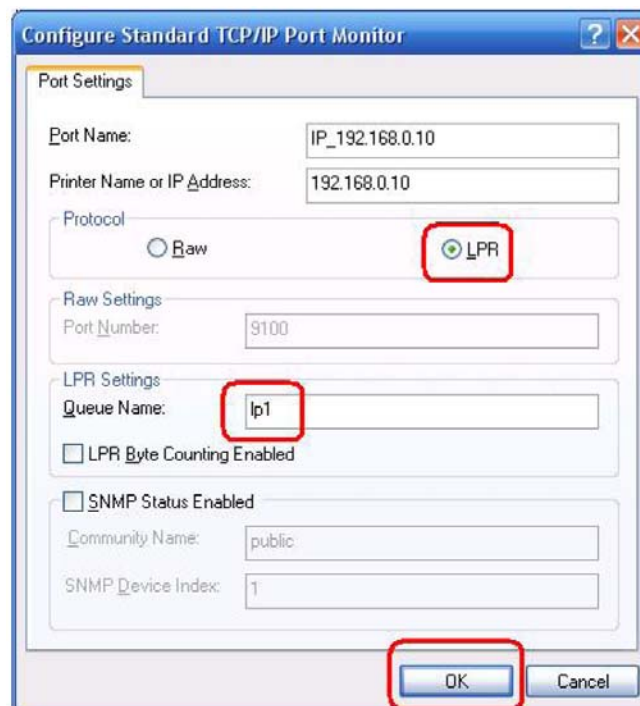




9. Select **Customer**, and then click **Settings**.



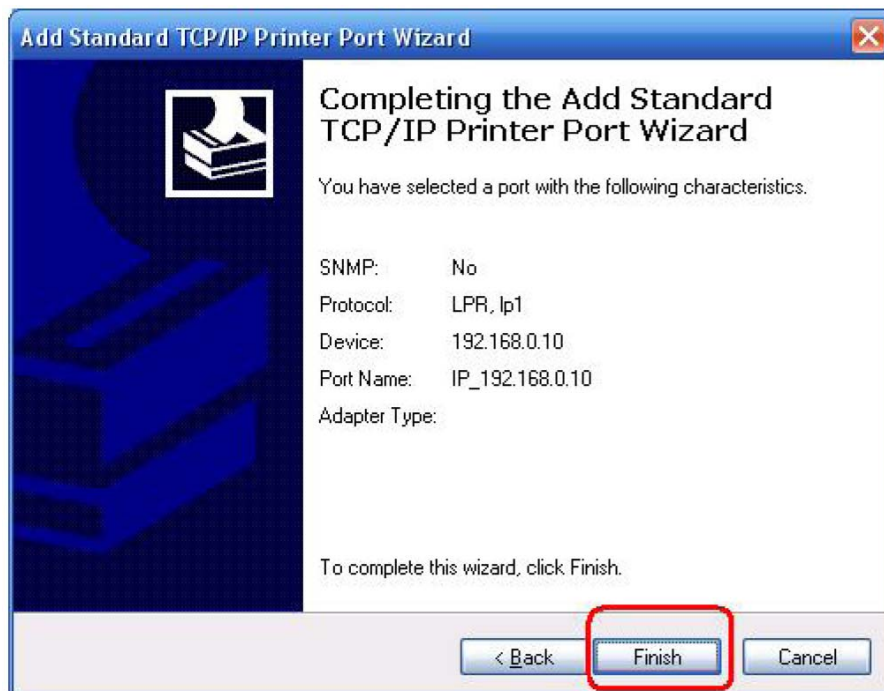
10. Select **LPR**, input **lp1** as the Queue Name. Click **OK**.



11. Click **Next**.

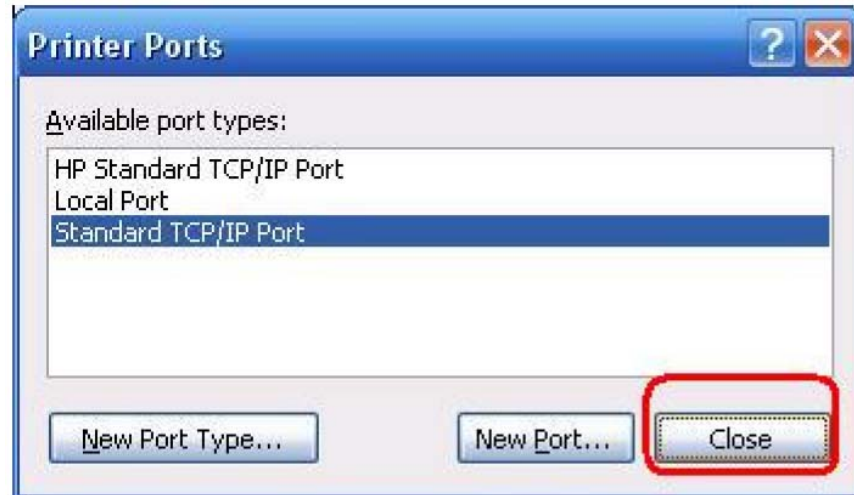


12. Click **Finish**.

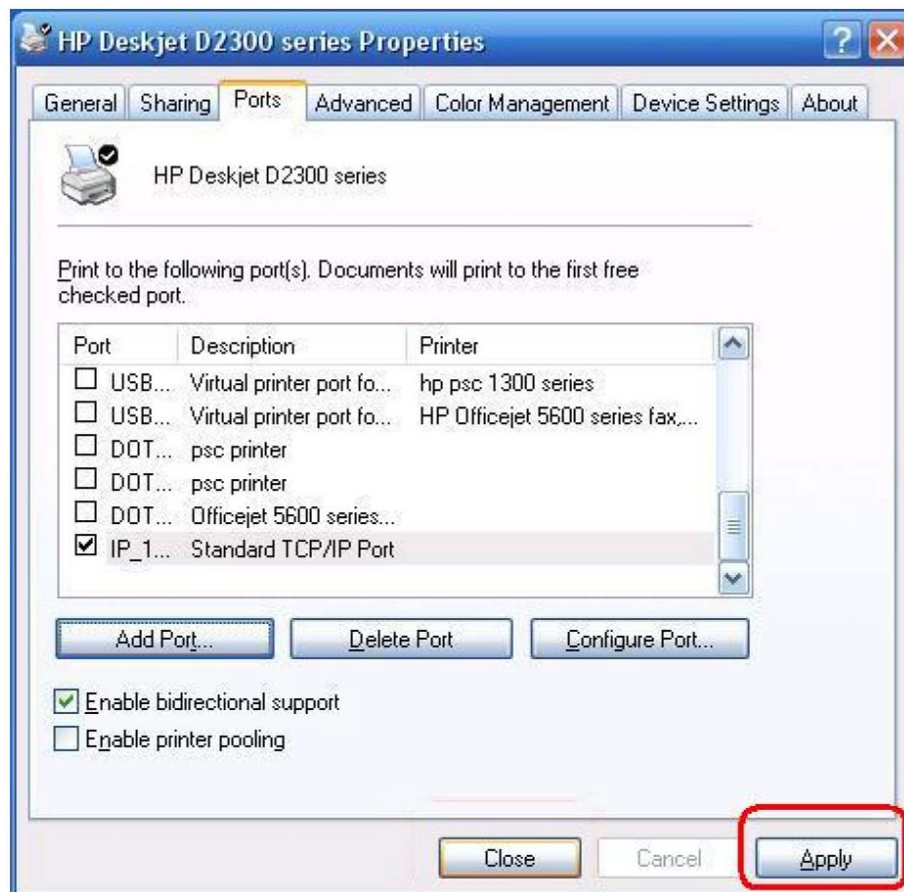




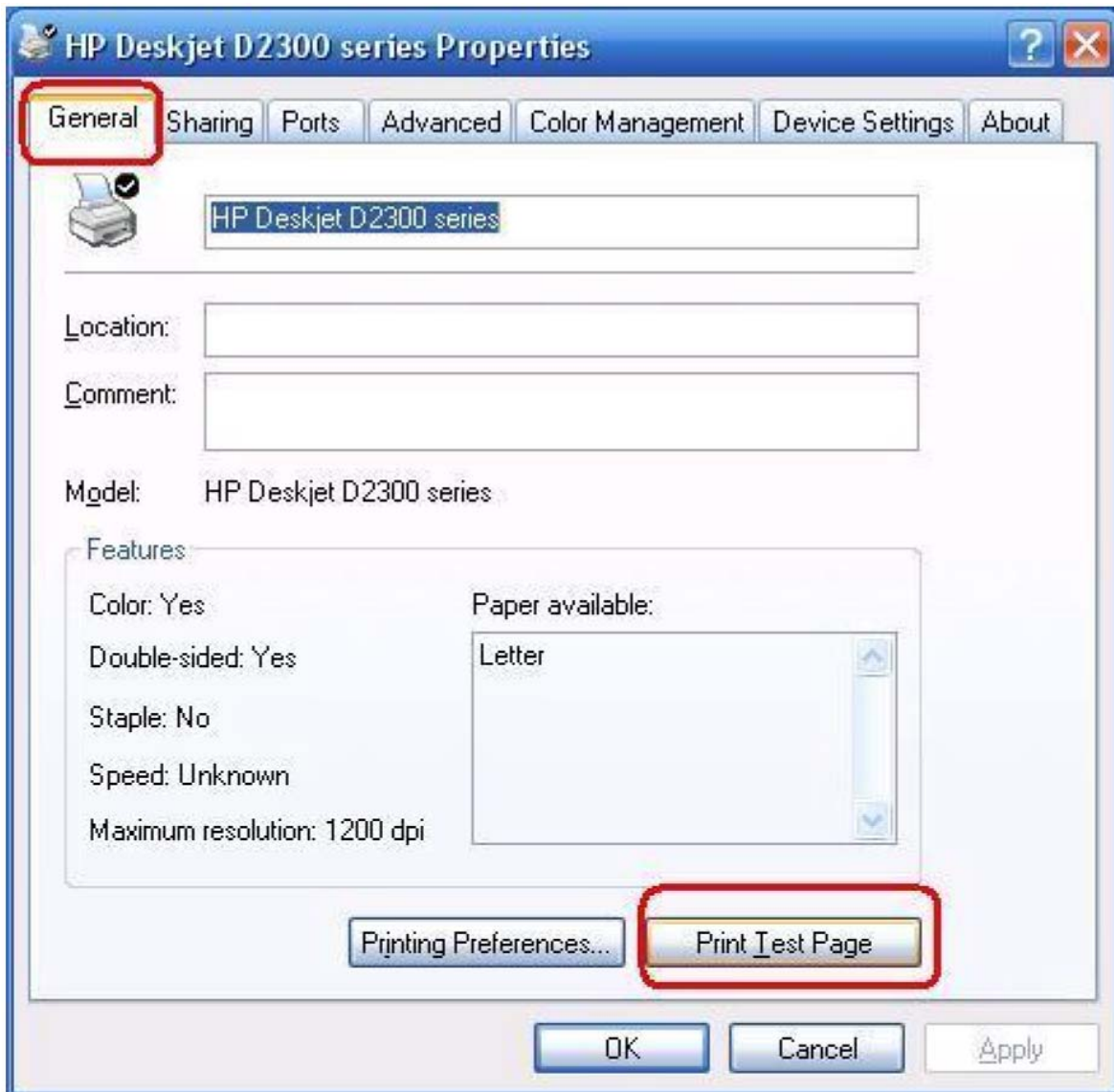
13. Click **Close**.



14. Click **Apply** to finish the configuration.

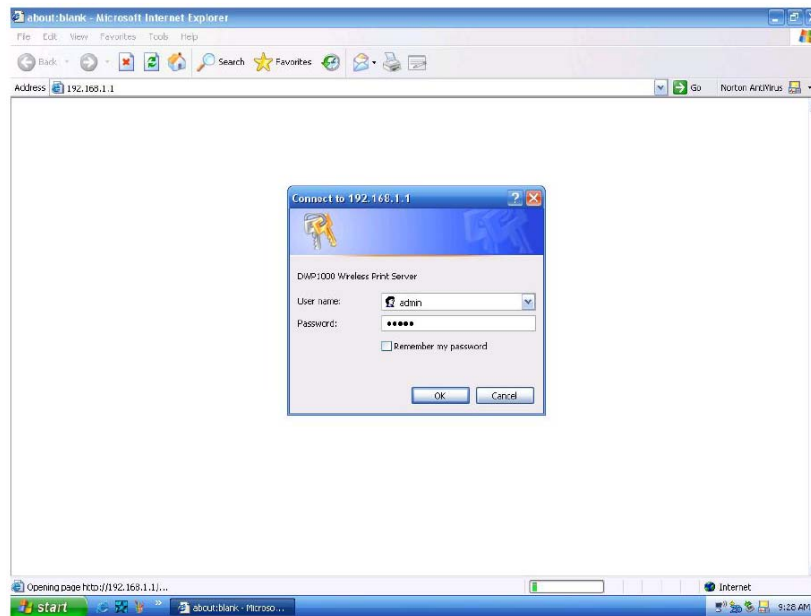


15. Now you can try to print a test page. Click **General** -> **Print Test Page**.

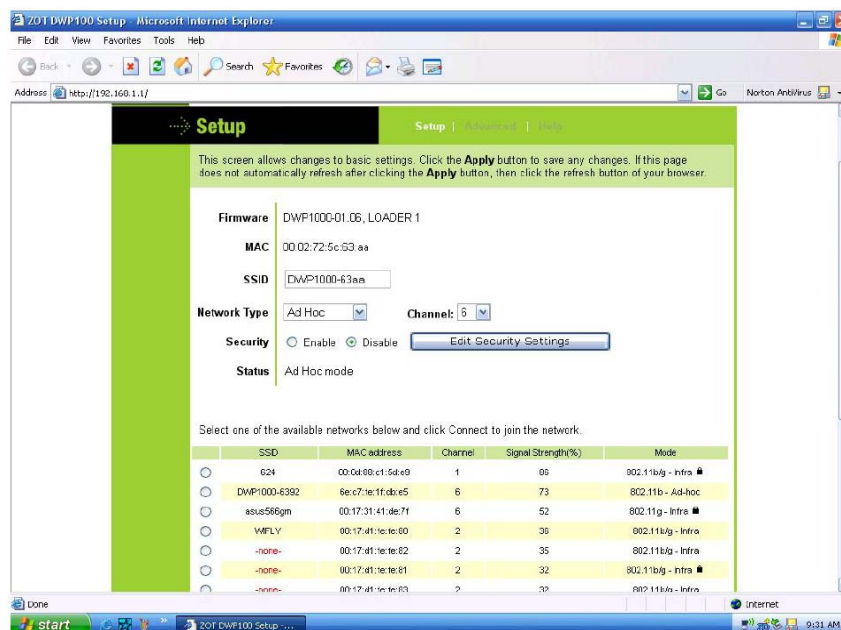


## How to change the default settings of wireless print server?

1. Enter the wireless print server's IP address in the Address field of Web browser. Press Enter. Input the **admin/0000** as the default Username/Password.



2. Now you can change the IP address and wireless settings (e.g. wireless infrastructure mode) if necessary for your current wireless network.



## How to reset wireless print server?

1. The reset button is what you will press if you need to reset the wireless print server.
2. Unplug the power adapter; insert a paper clip into the opening next to the jack.
3. Press the button and hold it.
4. Plug the power adapter.
5. Wait for five seconds, and then release it.

All contents are subject to change without prior notice.

