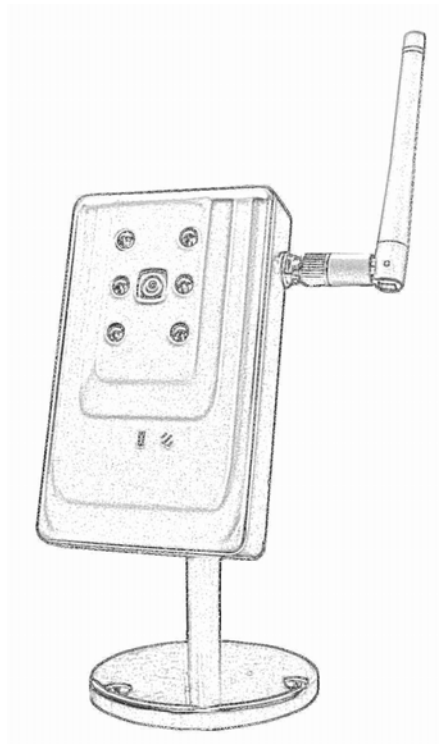


Multi-Profile CMOS Infrared Network Camera



Quick Start Guide

About multi-profile

Multi-profile stands for simultaneously video stream. The Network Camera and Video Server can generate MPEG4 and MJPEG streaming simultaneously to different users. Moreover, the resolution can be different from one user to another. This state-of-art design is considerable to fit in various network environments.

Before Installation

Before installation, please be sure to read this quick installation guide and user's manual carefully to complete machine installation.

System Requirements

Multi-Profile CMOS IR Network Camera		
Network Environment		
	LAN Model	WLAN Model
Network Interface	10/100MBase-TX Ethernet	802.11b/g WLAN (SMA antenna)
Monitoring System	Recommended for Internet Explorer 6.0 or later	
System Hardware	<ul style="list-style-type: none">· CPU: Pentium 4, 2GHz or above· Memory Size : 512 MB (512 MB or above Recommended)· VGA card resolution : 1024 x 768 or above· Network bandwidth: In VGA resolution mode, minimum upload bandwidth is 1M bit.	
System Requirement for Viewer & Recorder Application		
Support OS	Win 2000 , Win XP, Win Vista	
System Hardware	<ul style="list-style-type: none">16 cameras surveillance application· CPU: Pentium D, 2.8GHz or faster· Memory Size : 512 MB or above· VGA card resolution : 1024 x 768 or above	

Physical Installation

1. Connect an Ethernet cable

Method 1: Connect one end of the cross over cable to the LAN port located on the Network Camera's bottom and attach the other end to your PC directly.



Method 2: Connect one end of the Ethernet cable to the



LAN port located on the Network Camera's bottom and attach the other end to the network device (hub or switch).

2. (WLAN model only) Attach the SMA antenna

Find antenna in accessory. Attach the antenna to the IP cam SMA connector.



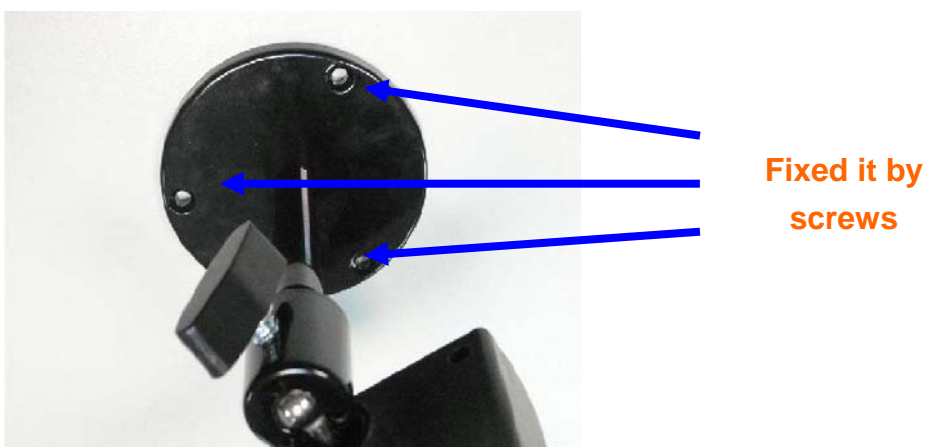
3. Check the LED (Front Panel)

The LED is defined to identify LAN/WLAN connection type. When LAN port is connected, the LED will be green. For WLAN model, if LAN ported is connected, the LED will be green; if LAN cable is removed; the IP cam will change to WLAN connection and LED change to orange color.



4. Place the Camera on the table or fix it onto ceiling or wall

Use screws to fix the Network Camera onto the ceiling or wall. You could also put the Network Camera on the table directly.



5. Attach the power supply

Connect the provided power adapter labeled "5V DC" to the Network Camera connector on

bottom and then plug into AC power socket.

Camera administration

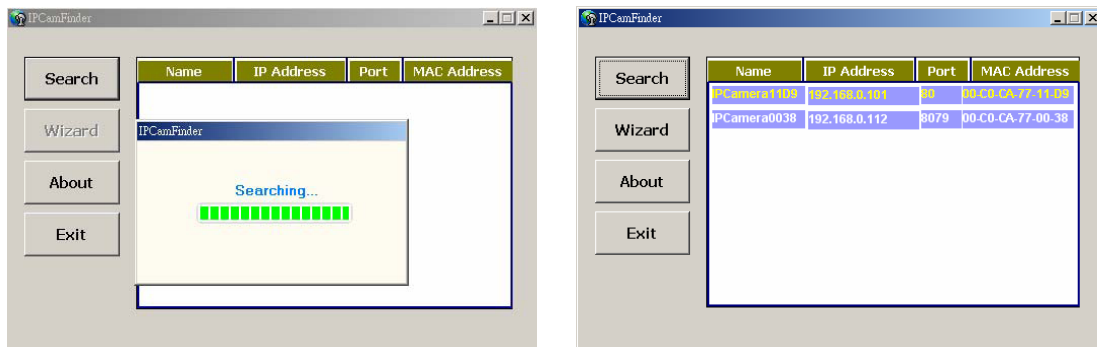
1. PC Viewer

The Network Camera provides GUI (Web based, Graphical User Interface) for machine management and monitoring. PC viewer supports Microsoft internet Explorer 6.0 or later with Java support

2. Use “IP Wizard” to locate IP address

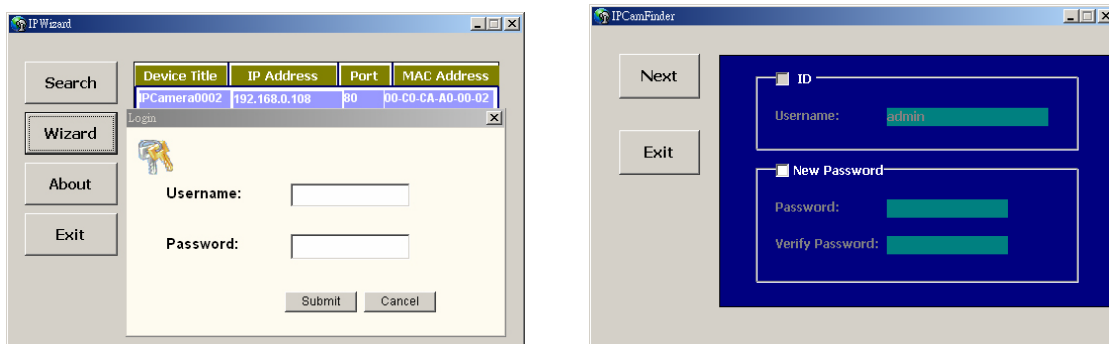
Default “DHCP On”, means dynamic IP address should be assigned. User may use “IP Wizard” utility to search all IP Cameras in the LAN environment.

Press “Search” button. IP Wizard will list all IP Cameras in the LAN environment::



Wizard function:

The utility featured with “Wizard” function to help user easy install Network camera. User can step by step to setup IP address, username and password.



Username and Password:

The Network Camera will prompt for User Name and Password. **Default username is: admin, leave password blank.**

Note 1: If no IP address is assigned after 30 seconds, the Network camera will automatically

assign 192.168.0.100. User may now open your web browser, and key in <http://192.168.0.100> in the address bar of your web browser to logon Network Camera's web configuration page.

Note 2: If you want to enable WLAN connection, please refer to user's manual inside CD, the section "Setting/Network".

Note 3: Power Line Frequency

- If you found the video image is flash, you may need to choose 50 or 60 Hz frequency (depends on country).
- World wide power line frequency table is inside CD, Appendix

Note 4: If you have problem when connecting the network camera to a router, please read user's manual inside CD, the section "Installation to a router".

3G Mobile Phone (3GPP) Usage

The device is 3GPP compatible by default. To view live video over 3GPP, here is a briefly steps. Please check user's manual inside product CD for detail

Step 1: You must apply a 3G mobile phone with 3GPP service. Please contact your 3G cell phone service provider for detail.

Step 2: Check that the IP camera has a completely **PUBLIC IP address**, i.e. no ports blocked by a firewall. It is highly recommended that you have a fixed and public IP address without any firewall blocked

Step 3: check RTSP port and the default port is **554**.

Step 4: Bitrate

Setting → Video → MP4/QQVGA → Bit rate, set the maximum bit rate to **lower than 128 kbit/s**.

To use the 3GPP function, in addition to previous section, you might need more information or configuration to make this function work.

Note that to use the 3GPP function, it strongly recommends to install the Networked Device with a public and fixed IP address without any firewall protection.

Mobile Phone Dialing procedure:

Step 1: Contact your cell phone provider and make sure that **3GPP service is available**. Support cell phone list please keep contact with your Network Camera sales.

Step 2: **Enable “internet access” function on your mobile phone**. Some telecom will automatically download the setup profile to your mobile phone; some telecom need you call the service center to enable the internet access function

Step 3: Choose a verified **video player (ex. Realplayer or PacketVideo)**

Step 4-1: Open the video player. Base on your requirement, type either URL address (**for firmware version 2.x**):

rtsp://host#avN for both audio and video tracks.

rtsp://host#videoN for video track only.

rtsp://host#audio for audio track only.

Where *host* is the host name or IP address of the camera, and *N* is the number of the profile (between 2 and 3) for the video stream.

Step 4-2: **For firmware version 3.x:**

rtsp://host#mpeg4/media.3gp

Where *host* is the host name or IP address of the camera.

IP camera video or audio will show up on your player now!

**Made in Taiwan
All Rights Reserved 2007**

